

Product datasheet for TP313137L

SUMF2 (NM_015411) Human Recombinant Protein

Product data:

| | |
|---------------------------------------|--|
| Product Type: | Recombinant Proteins |
| Description: | Recombinant protein of human sulfatase modifying factor 2 (SUMF2), transcript variant 2, 1 mg |
| Species: | Human |
| Expression Host: | HEK293T |
| Expression cDNA Clone or AA Sequence: | >RC213137 representing NM_015411 Red =Cloning site Green =Tags(s) MARHGLPLLPLLSLLVGAWLKLGNQATSMVQLQGGRFLMGTNSPDSRDGEGPVREATVKPFAIDIFPVT NKDFRDFVREKKYRTEAEMFGWSFVFEDFVSDLRNKATQPMKSVLWWLPVEKAFWRQPAGPGSGIRERL EHPVLHVSWNDARAYCAWRGKRLPTEEEWEFAARGGLKGQVYPWGNWFQPNRTNLWQGKFKGDKAEDGF HGVSPVNAFPAQNNGLYDLLGNVWEWTASPYQAAEQDMRVLRGASWIDTADGSANHRARVTRMGNTPD SASDNLGFRCAADAGRPPGEL TRTRPLEQKLISEEDLAANDILDYKDDDDKV |
| Tag: | C-Myc/DDK |
| Predicted MW: | 31.2 kDa |
| Concentration: | >0.05 µg/µL as determined by microplate BCA method |
| Purity: | > 80% as determined by SDS-PAGE and Coomassie blue staining |
| Buffer: | 25 mM Tris-HCl, 100 mM glycine, pH 7.3, 10% glycerol |
| Preparation: | Recombinant protein was captured through anti-DDK affinity column followed by conventional chromatography steps. |
| Note: | For testing in cell culture applications, please filter before use. Note that you may experience some loss of protein during the filtration process. |
| Storage: | Store at -80°C. |
| Stability: | Stable for 12 months from the date of receipt of the product under proper storage and handling conditions. Avoid repeated freeze-thaw cycles. |
| RefSeq: | NP_056226 |
| Locus ID: | 25870 |



[View online »](#)

UniProt ID: [Q8NBJ7](#)

RefSeq Size: 2005

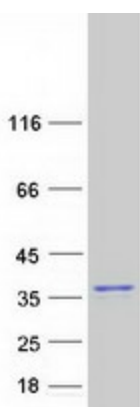
Cytogenetics: 7p11.2

RefSeq ORF: 903

Synonyms: pFGE

Summary: The catalytic sites of sulfatases are only active if they contain a unique amino acid, C-alpha-formylglycine (FGly). The FGly residue is posttranslationally generated from a cysteine by enzymes with FGly-generating activity. The gene described in this record is a member of the sulfatase-modifying factor family and encodes a protein with a DUF323 domain that localizes to the lumen of the endoplasmic reticulum. This protein has low levels of FGly-generating activity but can heterodimerize with another family member - a protein with high levels of FGly-generating activity. Alternate transcriptional splice variants, encoding different isoforms, have been characterized. [provided by RefSeq, Jul 2008]

Product images:



Coomassie blue staining of purified SUMF2 protein (Cat# [TP313137]). The protein was produced from HEK293T cells transfected with SUMF2 cDNA clone (Cat# [RC213137]) using MegaTran 2.0 (Cat# [TT210002]).