

Product datasheet for TP313137

SUMF2 (NM_015411) Human Recombinant Protein

Product data:

Product Type: Recombinant Proteins

Description: Recombinant protein of human sulfatase modifying factor 2 (SUMF2), transcript variant 2

Species: Human

Expression Host: HEK293T

Expression cDNA Clone or AA Sequence: >RC213137 representing NM_015411

Red=Cloning site **Green**=Tags(s)

MARHGLPLLPLLSLLVGAWLKLGNQATSMVQLQGGRFLMGTNSPDSRDGEGPVREATVKPFAIDIFPVT
NKDFRDFVREKKYRTEAEMFGWSFVFEDFVSDLRNKATQPMKSVLWWLPVEKAFWRQPAGPGSGIRERL
EHPVLHVSWNDARAYCAWRGKRLPTEEEWEFAARGGLKGQVYPWGNWFQPNRTNLWQGFKPKGDKAEDGF
HGVSPVNAFPAQNNGLYDLLGNVWEWTASPYQAAEQDMRVLRGASWIDTADGSANHRARVTRMGNTPD
SASDNLGFRCAADAGRPPGEL

TRTRPLEQKLISEEDLAANDILDYKDDDDKV

Tag: C-Myc/DDK

Predicted MW: 31.2 kDa

Concentration: >0.05 µg/µL as determined by microplate BCA method

Purity: > 80% as determined by SDS-PAGE and Coomassie blue staining

Buffer: 25 mM Tris-HCl, 100 mM glycine, pH 7.3, 10% glycerol

Preparation: Recombinant protein was captured through anti-DDK affinity column followed by conventional chromatography steps.

Note: For testing in cell culture applications, please filter before use. Note that you may experience some loss of protein during the filtration process.

Storage: Store at -80°C.

Stability: Stable for 12 months from the date of receipt of the product under proper storage and handling conditions. Avoid repeated freeze-thaw cycles.

RefSeq: [NP_056226](#)

Locus ID: 25870



[View online »](#)

UniProt ID: [Q8NBJ7](#)

RefSeq Size: 2005

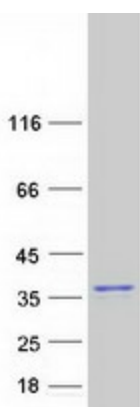
Cytogenetics: 7p11.2

RefSeq ORF: 903

Synonyms: pFGE

Summary: The catalytic sites of sulfatases are only active if they contain a unique amino acid, C-alpha-formylglycine (FGly). The FGly residue is posttranslationally generated from a cysteine by enzymes with FGly-generating activity. The gene described in this record is a member of the sulfatase-modifying factor family and encodes a protein with a DUF323 domain that localizes to the lumen of the endoplasmic reticulum. This protein has low levels of FGly-generating activity but can heterodimerize with another family member - a protein with high levels of FGly-generating activity. Alternate transcriptional splice variants, encoding different isoforms, have been characterized. [provided by RefSeq, Jul 2008]

Product images:



Coomassie blue staining of purified SUMF2 protein (Cat# TP313137). The protein was produced from HEK293T cells transfected with SUMF2 cDNA clone (Cat# [RC213137]) using MegaTran 2.0 (Cat# [TT210002]).