

Product datasheet for **TP313102M**

SDF2L1 (NM_022044) Human Recombinant Protein

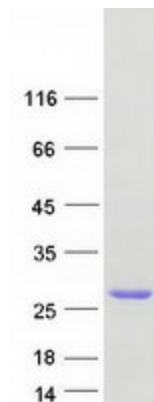
Product data:

Product Type:	Recombinant Proteins
Description:	Recombinant protein of human stromal cell-derived factor 2-like 1 (SDF2L1), 100 µg
Species:	Human
Expression Host:	HEK293T
Expression cDNA Clone or AA Sequence:	>RC213102 representing NM_022044 Red =Cloning site Green =Tags(s)
	MWSAGRGGAAWPVLLGLLLALLVPGGGAAKTGAELVTCGSVLKLLNTHHRVRLHSHDIKYGSGSGQQSV T GVEASDDANSYWRIRGGSEGGCPRGSPVRCGQAVRLTHVLTGKNLHTHHFPSPLSNNQEVSAGFEDGE D DLDLWTVRCSGQHWEREAAVRFQHVGTSVFLSVTGEQYGSPIRGQHEVHGMPSANTHNTWKAMEGIFI KP SVEPSAGHDEL
	TRTRPLEQKLISEEDLAANDILDYKDDDDKV
Tag:	C-Myc/DDK
Predicted MW:	20.9 kDa
Concentration:	>0.05 µg/µL as determined by microplate BCA method
Purity:	> 80% as determined by SDS-PAGE and Coomassie blue staining
Buffer:	25 mM Tris-HCl, 100 mM glycine, pH 7.3, 10% glycerol
Preparation:	Recombinant protein was captured through anti-DDK affinity column followed by conventional chromatography steps.
Note:	For testing in cell culture applications, please filter before use. Note that you may experience some loss of protein during the filtration process.
Storage:	Store at -80°C.
Stability:	Stable for 12 months from the date of receipt of the product under proper storage and handling conditions. Avoid repeated freeze-thaw cycles.
RefSeq:	<u>NP_071327</u>



[View online »](#)

Locus ID: 23753
 UniProt ID: [Q9HCN8](#)
 RefSeq Size: 876
 Cytogenetics: 22q11.21
 RefSeq ORF: 663
 Protein Families: Transmembrane

Product images:


Coomassie blue staining of purified SDF2L1 protein (Cat# [TP313102]). The protein was produced from HEK293T cells transfected with SDF2L1 cDNA clone (Cat# [RC213102]) using MegaTran 2.0 (Cat# [TT210002]).