

Product datasheet for **TP313087M**

KLF14 (NM_138693) Human Recombinant Protein

Product data:

| | |
|---------------------------------------|------------------------------------------------------------------------------------|
| Product Type: | Recombinant Proteins |
| Description: | Recombinant protein of human Kruppel-like factor 14 (KLF14), 100 µg |
| Species: | Human |
| Expression Host: | HEK293T |
| Expression cDNA Clone or AA Sequence: | >RC213087 representing NM_138693 Red =Cloning site Green =Tags(s) |

MSAAVACLDYFAAECLVSMASAGAVVHRRPPDPEGAGGAAGSEVGAAPESALPGPGSPGASVPQLPQVP
APSPGAGGAAPHLLAASVWADLRGSSGEGSWENSGEAPRASSGFSDPIPCSVQTPCSELAPASGAAVCA
PESSDAPAVPSAPAAPGAPAASGGFSGGALGAGPAPAADQAPRRRSVTPAAKRHQCPFGCTKAYYKSS
HLKSHQRTHTGERPFSCDWLDCDKKFTSRDELARHYRHTTGEKRFSCPLCPKQFSRSDHLTKHARRHPT
HPDMIEYRGRRRTPRIDPPLTSEVESSASGSGPGPAPSFTTCL

SGPTRRRLEQKLISEEDLAANDILDYKDDDDKV

| | |
|----------------|------------------------------------------------------------------------------------------------------------------------------------------------------|
| Tag: | C-Myc/DDK |
| Predicted MW: | 32.9 kDa |
| Concentration: | >0.05 µg/µL as determined by microplate BCA method |
| Purity: | > 80% as determined by SDS-PAGE and Coomassie blue staining |
| Buffer: | 25 mM Tris-HCl, 100 mM glycine, pH 7.3, 10% glycerol |
| Preparation: | Recombinant protein was captured through anti-DDK affinity column followed by conventional chromatography steps. |
| Note: | For testing in cell culture applications, please filter before use. Note that you may experience some loss of protein during the filtration process. |
| Storage: | Store at -80°C. |
| Stability: | Stable for 12 months from the date of receipt of the product under proper storage and handling conditions. Avoid repeated freeze-thaw cycles. |
| RefSeq: | NP_619638 |
| Locus ID: | 136259 |

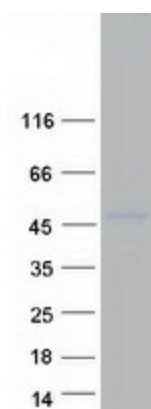


[View online »](#)

UniProt ID: [Q8TD94](#)
RefSeq Size: 1383
Cytogenetics: 7q32.2
RefSeq ORF: 969
Synonyms: BTEB5

Summary: This intronless gene encodes a member of the Kruppel-like family of transcription factors. The encoded protein functions as a transcriptional co-repressor, and is induced by transforming growth factor-beta (TGF-beta) to repress TGF-beta receptor II gene expression. This gene exhibits imprinted expression from the maternal allele in embryonic and extra-embryonic tissues. [provided by RefSeq, Jul 2013]

Product images:



Coomassie blue staining of purified KLF14 protein (Cat# [TP313087]). The protein was produced from HEK293T cells transfected with KLF14 cDNA clone (Cat# [RC213087]) using MegaTran 2.0 (Cat# [TT210002]).