

Product datasheet for **TP313087L**

KLF14 (NM_138693) Human Recombinant Protein

Product data:

Product Type:	Recombinant Proteins
Description:	Recombinant protein of human Kruppel-like factor 14 (KLF14), 1 mg
Species:	Human
Expression Host:	HEK293T
Expression cDNA Clone or AA Sequence:	>RC213087 representing NM_138693 Red =Cloning site Green =Tags(s)

MSAAVACLDYFAAECLVSMASAGAVVHRRPPDPEGAGGAAGSEVGAHHPESALPGPGSPGASVPQLPQVP
APSPGAGGAAPHLLAASVWADLRGSSGEGSWENSGEAPRASSGFSDPIPCSVQTPCSELAPASGAAVCA
PESSDAPAVPSAPAAPGAPAASGGFSGGALGAGPAPAADQAPRRRSVTPAAKRHQCPFGCTKAYYKSS
HLKSHQRTHTGERPFSCDWLDCDKKFTSRDELARHYRHTTGEKRFSCPLCPKQFSRSDHLTKHARRHPT
HPDMIEYRGRRRTPRIDPPLTSEVESSASGSGPGPAPSFTTCL

SGPTRRRLEQKLISEEDLAANDILDYKDDDDKV

Tag:	C-Myc/DDK
Predicted MW:	32.9 kDa
Concentration:	>0.05 µg/µL as determined by microplate BCA method
Purity:	> 80% as determined by SDS-PAGE and Coomassie blue staining
Buffer:	25 mM Tris-HCl, 100 mM glycine, pH 7.3, 10% glycerol
Preparation:	Recombinant protein was captured through anti-DDK affinity column followed by conventional chromatography steps.
Note:	For testing in cell culture applications, please filter before use. Note that you may experience some loss of protein during the filtration process.
Storage:	Store at -80°C.
Stability:	Stable for 12 months from the date of receipt of the product under proper storage and handling conditions. Avoid repeated freeze-thaw cycles.
RefSeq:	NP_619638
Locus ID:	136259

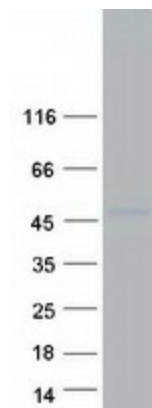


[View online »](#)

UniProt ID: [Q8TD94](#)
RefSeq Size: 1383
Cytogenetics: 7q32.2
RefSeq ORF: 969
Synonyms: BTEB5

Summary: This intronless gene encodes a member of the Kruppel-like family of transcription factors. The encoded protein functions as a transcriptional co-repressor, and is induced by transforming growth factor-beta (TGF-beta) to repress TGF-beta receptor II gene expression. This gene exhibits imprinted expression from the maternal allele in embryonic and extra-embryonic tissues. [provided by RefSeq, Jul 2013]

Product images:



Coomassie blue staining of purified KLF14 protein (Cat# [TP313087]). The protein was produced from HEK293T cells transfected with KLF14 cDNA clone (Cat# [RC213087]) using MegaTran 2.0 (Cat# [TT210002]).