

Product datasheet for **TP313074M**

EPS8L1 (NM_133180) Human Recombinant Protein

Product data:

Product Type:	Recombinant Proteins
Description:	Recombinant protein of human EPS8-like 1 (EPS8L1), transcript variant 1, 100 µg
Species:	Human
Expression Host:	HEK293T
Expression cDNA Clone or AA Sequence:	>RC213074 representing NM_133180 Red =Cloning site Green =Tags(s)

MSTATGPEAAPKPSAKSIYEQRKRYSTVVMADVSYQYPVNHVTFCLGEDDGVHTVEDASRKLAVMDSQGR
 VWAQEMLLRVSPDHVTLLDPASKEELESYPLGAIVRCDAVMPPGRSRLLLLVCQEPERAQPDVHFFQGL
 RLGAELIREDIQGALHNYRSGRGERRAAALRATQEELQRDRSPAETPPLQRRPSVRAVISTVERGAGRG
 RPQAKPIPEAEEAQRPEPVGTSNADSASPD LGPRGPD LAVLQAEREVDILNHVFDDVESFVSRLQKSAE
 AARVLEHRERGRSRRRAAGEGLLTLRAKPPSEAEYTDVLQKIKYAFSLLARLRGNIADPSSPELLHFLF
 GPLQMIVNTSGGPEFASSVRRPHLTSDAVALLRDNVTPRENELWTS LGDSWTRPGLELSPEEGPPYRPEF
 FSGWEPPVTD PQSRAWEDPVEKQLQHERRRRQQSAPQVAVNGHRDLEPESEPQLESETAGKWVLCNYD
 FQ
 ARNSSELSVKQRDVLEVLDDSRKWWKVRDPAGQEGYVPYNILTPYPGRLHHSQSPARSLNSTPPPPAP
 APAPPPALARPRWDRPRWDSCDSLNGLDPSEKEKFSQMLIVNEELQARLAQGRSGPSRAVPGPRAPEPQ
 L
 SPGSDASEVRAWLQAKGFSSGTVDALGVLTGAQLFSLQKEELRAVSPEEGARVYSQVTVQRSLLLEDKEKV
 SELEAVMEKQKKKVEGEVEMEVI

TRTRPLEQKLISEEDLAANDILDYKDDDDKV

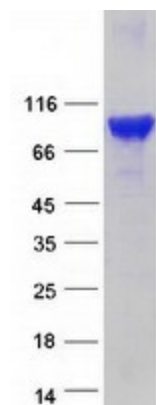
Tag:	C-Myc/DDK
Predicted MW:	80.1 kDa
Concentration:	>0.05 µg/µL as determined by microplate BCA method
Purity:	> 80% as determined by SDS-PAGE and Coomassie blue staining
Buffer:	25 mM Tris-HCl, 100 mM glycine, pH 7.3, 10% glycerol
Preparation:	Recombinant protein was captured through anti-DDK affinity column followed by conventional chromatography steps.



[View online »](#)

Note:	For testing in cell culture applications, please filter before use. Note that you may experience some loss of protein during the filtration process.
Storage:	Store at -80°C.
Stability:	Stable for 12 months from the date of receipt of the product under proper storage and handling conditions. Avoid repeated freeze-thaw cycles.
RefSeq:	NP_573441
Locus ID:	54869
UniProt ID:	Q8TE68
RefSeq Size:	2543
Cytogenetics:	19q13.42
RefSeq ORF:	2169
Synonyms:	DRC3; EPS8R1; PP10566
Summary:	This gene encodes a protein that is related to epidermal growth factor receptor pathway substrate 8 (EPS8), a substrate for the epidermal growth factor receptor. The function of this protein is unknown. At least two alternatively spliced transcript variants encoding different isoforms have been found for this gene. [provided by RefSeq, Jul 2008]
Protein Families:	Druggable Genome

Product images:



Coomassie blue staining of purified EPS8L1 protein (Cat# [TP313074]). The protein was produced from HEK293T cells transfected with EPS8L1 cDNA clone (Cat# [RC213074]) using MegaTran 2.0 (Cat# [TT210002]).