

## Product datasheet for TP313063L

### ALS2CL (NM\_182775) Human Recombinant Protein

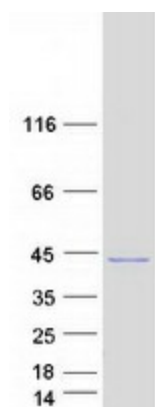
#### Product data:

Product Type:	Recombinant Proteins
Description:	Recombinant protein of human ALS2 C-terminal like (ALS2CL), transcript variant 3, 1 mg
Species:	Human
Expression Host:	HEK293T
Expression cDNA Clone or AA Sequence:	>RC213063 representing NM_182775 <div> <div>Red</div>=Cloning site <div>Green</div>=Tags(s) </div> <p>           MEDILEELLQHREPKALQLYLRKALSNSLHPLGKLLRTLMLTFQATYAGVGANKHLQELAQEEVKQHAQE            LWAAAYRGLLRVALERKQGQALEEDEDTTETRDQLQVHGLVPLMLPSFYSELFYLLYLLHEREDSFYSQGIAN            LSLFPDTQLLEFLDVQKHLWPLKDLTLTSNQRYSLVRDKCFLSATECLQKIMTTVDPREKLEVLERTYGE            IEGTVSRVLGREYKLPMDLLPLLIYVVSARIRIHLGAEIHLRDMMDPNHTGGLYDFLLTALESCYEHI            QKEDMRLHRLPGHWHWSRELW         </p> <div> <div>TR</div> <div>TRPLEQKLISEEDLAANDILDYKDDDDKV</div> </div>
Tag:	C-Myc/DDK
Predicted MW:	34.8 kDa
Concentration:	>0.05 µg/µL as determined by microplate BCA method
Purity:	> 80% as determined by SDS-PAGE and Coomassie blue staining
Buffer:	25 mM Tris-HCl, 100 mM glycine, pH 7.3, 10% glycerol
Preparation:	Recombinant protein was captured through anti-DDK affinity column followed by conventional chromatography steps.
Note:	For testing in cell culture applications, please filter before use. Note that you may experience some loss of protein during the filtration process.
Storage:	Store at -80°C.
Stability:	Stable for 12 months from the date of receipt of the product under proper storage and handling conditions. Avoid repeated freeze-thaw cycles.
RefSeq:	<u><a href="#">NP_877576</a></u>
Locus ID:	259173


[View online »](#)

UniProt ID:	<u>Q60I27</u>
RefSeq Size:	3148
Cytogenetics:	3p21.31
RefSeq ORF:	900
Synonyms:	RN49018
Summary:	Acts as a guanine nucleotide exchange factor (GEF) for Rab5 GTPase. Regulates the ALS2-mediated endosome dynamics.[UniProtKB/Swiss-Prot Function]
Protein Families:	Druggable Genome

### Product images:



Coomassie blue staining of purified ALS2CL protein (Cat# [TP313063]). The protein was produced from HEK293T cells transfected with ALS2CL cDNA clone (Cat# [RC213063]) using MegaTran 2.0 (Cat# [TT210002]).