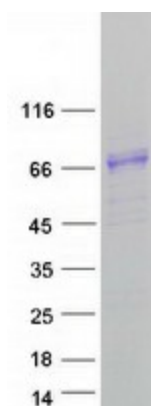


Stability:	Stable for 12 months from the date of receipt of the product under proper storage and handling conditions. Avoid repeated freeze-thaw cycles.
RefSeq:	NP_115801
Locus ID:	84439
UniProt ID:	Q96JK4 , F1T0G3
RefSeq Size:	2253
Cytogenetics:	14q32.2
RefSeq ORF:	1824
Synonyms:	KIAA1822; UNQ9245
Summary:	This gene encodes a protein that belongs to the glucose/sorbosone dehydrogenase family. The encoded protein also contains a domain that binds folate and reduced folic acid derivatives. [provided by RefSeq, Jul 2016]
Protein Families:	Druggable Genome

Product images:



Coomassie blue staining of purified HHIPL1 protein (Cat# [TP313058]). The protein was produced from HEK293T cells transfected with HHIPL1 cDNA clone (Cat# [RC213058]) using MegaTran 2.0 (Cat# [TT210002]).