

## Product datasheet for TP313058L

### HHIPL1 (NM\_032425) Human Recombinant Protein

#### Product data:

Product Type:	Recombinant Proteins
Description:	Recombinant protein of human HHIP-like 1 (HHIPL1), transcript variant 2, 1 mg
Species:	Human
Expression Host:	HEK293T
Expression cDNA Clone or AA Sequence:	>RC213058 representing NM_032425 <b>Red</b> =Cloning site <b>Green</b> =Tags(s)

MARARAGALLALWVLGAAHPQCLDFRPPFRPTQPLRLCAQYSDFGCCDEGRDAELTRRFWALASRVDAE  
EWAACAGYARDLLCQECSPYAAHLYDAEDPFTPLRTVPGLCQDYCLDMWHKCRGLFRHLSTDQELWALEG  
NLARFCRYLSLDDTDYCFPYLLVNKLNLSNLGHVVADAKGCLQLCLEEVANGLRNPVAMVHARDGTHRFF  
VAEQVGLVWAYLPDRSRLGKPFNLISRVVLTSPWEGDERGFLGIAFHPSFQHNRRLVYVYVSVGIRSEW  
RISEFRVSEDDENAVDHSSERIILEVKEPASNHNGGQLLFGDDGYLYIFTGDGGMAGDPFGTFGNAQNKS  
ALLGKVLRIDVDRKERGLPYGIPDPNPFVGDPAAQPEVYALGVRNMWRCSFDRGDPSSGTGRGLFCGDV  
GQNKFEVDVVERGGNYGWRAREGFECYDRSLCANTSLNDLLPIFAYPHTVKGSVTGGYVYRGCEYPN  
GLYIFGDFMSGRLMSLQENPGTGQWQYSEICMGGHGTCEFPGLINNYPIISFGEDEAGELYFMSTGEP  
SATAPRGVYKIIDASSCKARSAMPGYVPAPSVCSLSLTSQPFIQWWK

TRTRPLEQKLISEEDLAANDILDYKDDDDKV

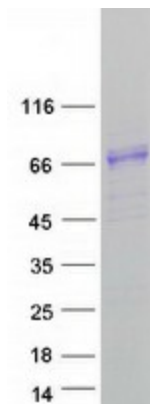
Tag:	C-Myc/DDK
Predicted MW:	67.7 kDa
Concentration:	>0.05 µg/µL as determined by microplate BCA method
Purity:	> 80% as determined by SDS-PAGE and Coomassie blue staining
Buffer:	25 mM Tris-HCl, 100 mM glycine, pH 7.3, 10% glycerol
Preparation:	Recombinant protein was captured through anti-DDK affinity column followed by conventional chromatography steps.
Note:	For testing in cell culture applications, please filter before use. Note that you may experience some loss of protein during the filtration process.
Storage:	Store at -80°C.



[View online »](#)

<b>Stability:</b>	Stable for 12 months from the date of receipt of the product under proper storage and handling conditions. Avoid repeated freeze-thaw cycles.
<b>RefSeq:</b>	<a href="#">NP_115801</a>
<b>Locus ID:</b>	84439
<b>UniProt ID:</b>	<a href="#">Q96JK4</a> , <a href="#">F1T0G3</a>
<b>RefSeq Size:</b>	2253
<b>Cytogenetics:</b>	14q32.2
<b>RefSeq ORF:</b>	1824
<b>Synonyms:</b>	KIAA1822; UNQ9245
<b>Summary:</b>	This gene encodes a protein that belongs to the glucose/sorbosone dehydrogenase family. The encoded protein also contains a domain that binds folate and reduced folic acid derivatives. [provided by RefSeq, Jul 2016]
<b>Protein Families:</b>	Druggable Genome

### Product images:



Coomassie blue staining of purified HHIPL1 protein (Cat# [TP313058]). The protein was produced from HEK293T cells transfected with HHIPL1 cDNA clone (Cat# [RC213058]) using MegaTran 2.0 (Cat# [TT210002]).