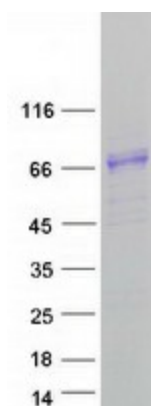




<b>Stability:</b>	Stable for 12 months from the date of receipt of the product under proper storage and handling conditions. Avoid repeated freeze-thaw cycles.
<b>RefSeq:</b>	<a href="#">NP_115801</a>
<b>Locus ID:</b>	84439
<b>UniProt ID:</b>	<a href="#">Q96JK4</a> , <a href="#">F1T0G3</a>
<b>RefSeq Size:</b>	2253
<b>Cytogenetics:</b>	14q32.2
<b>RefSeq ORF:</b>	1824
<b>Synonyms:</b>	KIAA1822; UNQ9245
<b>Summary:</b>	This gene encodes a protein that belongs to the glucose/sorbosone dehydrogenase family. The encoded protein also contains a domain that binds folate and reduced folic acid derivatives. [provided by RefSeq, Jul 2016]
<b>Protein Families:</b>	Druggable Genome

### Product images:



Coomassie blue staining of purified HHIPL1 protein (Cat# TP313058). The protein was produced from HEK293T cells transfected with HHIPL1 cDNA clone (Cat# [RC213058]) using MegaTran 2.0 (Cat# [TT210002]).