

Product datasheet for **TP313051M**

Tcl1 (TCL1A) (NM_001098725) Human Recombinant Protein

Product data:

Product Type:	Recombinant Proteins
Description:	Recombinant protein of human T-cell leukemia/lymphoma 1A (TCL1A), transcript variant 2, 100 µg
Species:	Human
Expression Host:	HEK293T
Expression cDNA Clone or AA Sequence:	>RC213051 protein sequence Red =Cloning site Green =Tags(s)
	MAECPTLGEAVTDHPDRLWAWEKFVYLDEKQHAWLPLTIEIKDRLQLRVLLRREDVWLGRPMTPTQIGPS LLPIMWQLYPDGRYSSDSSFWRVLYHIKIDGVEDMLLELLPDD
	TR TRPLEQKLISEEDLAANDILDYKDDDDKV
Tag:	C-Myc/DDK
Predicted MW:	13.3 kDa
Concentration:	>0.05 µg/µL as determined by microplate BCA method
Purity:	> 80% as determined by SDS-PAGE and Coomassie blue staining
Buffer:	25 mM Tris-HCl, 100 mM glycine, pH 7.3, 10% glycerol
Preparation:	Recombinant protein was captured through anti-DDK affinity column followed by conventional chromatography steps.
Note:	For testing in cell culture applications, please filter before use. Note that you may experience some loss of protein during the filtration process.
Storage:	Store at -80°C.
Stability:	Stable for 12 months from the date of receipt of the product under proper storage and handling conditions. Avoid repeated freeze-thaw cycles.
RefSeq:	<u>NP_001092195</u>
Locus ID:	8115
UniProt ID:	<u>P56279</u> , <u>A0A024R6G5</u>
RefSeq Size:	1405



[View online »](#)

Cytogenetics: 14q32.13

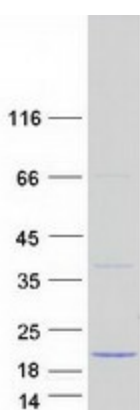
RefSeq ORF: 342

Synonyms: TCL1

Summary: Overexpression of the TCL1 gene in humans has been implicated in the development of mature T cell leukemia, in which chromosomal rearrangements bring the TCL1 gene in close proximity to the T-cell antigen receptor (TCR)-alpha (MIM 186880) or TCR-beta (MIM 186930) regulatory elements (summarized by Virgilio et al., 1998 [PubMed 9520462]). In normal T cells TCL1 is expressed in CD4-/CD8- cells, but not in cells at later stages of differentiation. TCL1 functions as a coactivator of the cell survival kinase AKT (MIM 164730) (Laine et al., 2000 [PubMed 10983986]).[supplied by OMIM, Jul 2010]

Protein Families: Druggable Genome

Product images:



Coomassie blue staining of purified TCL1A protein (Cat# [TP313051]). The protein was produced from HEK293T cells transfected with TCL1A cDNA clone (Cat# [RC213051]) using MegaTran 2.0 (Cat# [TT210002]).