

## Product datasheet for **TP313051L**

### Tcl1 (TCL1A) (NM\_001098725) Human Recombinant Protein

#### Product data:

Product Type:	Recombinant Proteins
Description:	Recombinant protein of human T-cell leukemia/lymphoma 1A (TCL1A), transcript variant 2, 1 mg
Species:	Human
Expression Host:	HEK293T
Expression cDNA Clone or AA Sequence:	>RC213051 protein sequence <b>Red</b> =Cloning site <b>Green</b> =Tags(s)
	MAECPTLGEAVTDHPDRLWAWEKFVYLDEKQHAWLPLTIEIKDRLQLRVLLRREDVWLGPRMPTPTQIGPS LLPIMWQLYPDGRYSSDSSFWRVLYHIKIDGVEDMLLELLPDD
	<b>TRTRPLEQKLISEEDLAANDILDYKDDDDKV</b>
Tag:	C-Myc/DDK
Predicted MW:	13.3 kDa
Concentration:	>0.05 µg/µL as determined by microplate BCA method
Purity:	> 80% as determined by SDS-PAGE and Coomassie blue staining
Buffer:	25 mM Tris-HCl, 100 mM glycine, pH 7.3, 10% glycerol
Preparation:	Recombinant protein was captured through anti-DDK affinity column followed by conventional chromatography steps.
Note:	For testing in cell culture applications, please filter before use. Note that you may experience some loss of protein during the filtration process.
Storage:	Store at -80°C.
Stability:	Stable for 12 months from the date of receipt of the product under proper storage and handling conditions. Avoid repeated freeze-thaw cycles.
RefSeq:	<u><a href="#">NP_001092195</a></u>
Locus ID:	8115
UniProt ID:	<u><a href="#">P56279</a></u> , <u><a href="#">A0A024R6G5</a></u>
RefSeq Size:	1405



[View online »](#)

Cytogenetics: 14q32.13

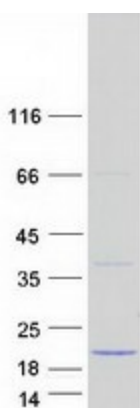
RefSeq ORF: 342

Synonyms: TCL1

**Summary:** Overexpression of the TCL1 gene in humans has been implicated in the development of mature T cell leukemia, in which chromosomal rearrangements bring the TCL1 gene in close proximity to the T-cell antigen receptor (TCR)-alpha (MIM 186880) or TCR-beta (MIM 186930) regulatory elements (summarized by Virgilio et al., 1998 [PubMed 9520462]). In normal T cells TCL1 is expressed in CD4-/CD8- cells, but not in cells at later stages of differentiation. TCL1 functions as a coactivator of the cell survival kinase AKT (MIM 164730) (Laine et al., 2000 [PubMed 10983986]).[supplied by OMIM, Jul 2010]

**Protein Families:** Druggable Genome

### Product images:



Coomassie blue staining of purified TCL1A protein (Cat# [TP313051]). The protein was produced from HEK293T cells transfected with TCL1A cDNA clone (Cat# [RC213051]) using MegaTran 2.0 (Cat# [TT210002]).