

Product datasheet for **TP313031M**

LAD1 (NM_005558) Human Recombinant Protein

Product data:

Product Type:	Recombinant Proteins
Description:	Recombinant protein of human ladinin 1 (LAD1), 100 µg
Species:	Human
Expression Host:	HEK293T
Expression cDNA Clone or AA Sequence:	>RC213031 representing NM_005558 Red =Cloning site Green =Tags(s)

MAVSRKDWSSALSSSLARQRTLEDEEEQERERRRRHRNLSSTTDDEAPRLSQNGDRQASASERLPSVEEAEV
PKPLPPASKDEDEDIQSILRTRQERRQRRQVVEAAQAPIQERLEAEEGRNLSLPVQATQKPLVSKKELEI
PPRRRLSREQRGPWALEEEESLVGREPEERKKGVPEKSPVLEKSSMPKKTAPEKSLVSDKTSISEKVLASE
KTSLSEKIAVSEKRNSSSEKKSVEKTSVSEKSLAPGMALGSGRRLVSEKASIFEKALASEKSPTADAKPA
PKRATASEQPLAQEPPASGGSPATTKEQRGRALPGKNLPSLAEQASDPPTVASRLPPVTLQVKIPSKEE
EADMSSPTQRTYSSSLKRSSPRTISFRMKPKKENSETTLTRSASMKLPDNTVKLGEKLERHYHTAIRRSES
VKSRGLPCTELFVAPVGVASKRHLFEKELAGQSRAPASSRKENLRLSGVVTSSLNLWISRTQESGDQDP
QEAQKASSATERSQWGWQKSDSSSLDAEV

TRTRPLEQKLISEEDLAANDILDYKDDDDKV

Tag:	C-Myc/DDK
Predicted MW:	57 kDa
Concentration:	>0.05 µg/µL as determined by microplate BCA method
Purity:	> 80% as determined by SDS-PAGE and Coomassie blue staining
Buffer:	25 mM Tris-HCl, 100 mM glycine, pH 7.3, 10% glycerol
Preparation:	Recombinant protein was captured through anti-DDK affinity column followed by conventional chromatography steps.
Note:	For testing in cell culture applications, please filter before use. Note that you may experience some loss of protein during the filtration process.
Storage:	Store at -80°C.
Stability:	Stable for 12 months from the date of receipt of the product under proper storage and handling conditions. Avoid repeated freeze-thaw cycles.



[View online »](#)

RefSeq: [NP_005549](#)

Locus ID: 3898

UniProt ID: [O00515](#)

RefSeq Size: 2869

Cytogenetics: 1q32.1

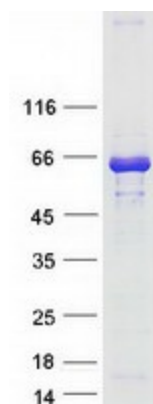
RefSeq ORF: 1551

Synonyms: LadA

Summary: The protein encoded by this gene may be an anchoring filament that is a component of basement membranes. It may contribute to the stability of the association of the epithelial layers with the underlying mesenchyme. [provided by RefSeq, Jul 2008]

Protein Families: Secreted Protein

Product images:



Coomassie blue staining of purified LAD1 protein (Cat# [TP313031]). The protein was produced from HEK293T cells transfected with LAD1 cDNA clone (Cat# [RC213031]) using MegaTran 2.0 (Cat# [TT210002]).