

Product datasheet for **TP313024M**

C20orf30 (TMEM230) (NM_001009924) Human Recombinant Protein

Product data:

Product Type:	Recombinant Proteins
Description:	Recombinant protein of human chromosome 20 open reading frame 30 (C20orf30), transcript variant 2, 100 µg
Species:	Human
Expression Host:	HEK293T
Expression cDNA Clone or AA Sequence:	>RC213024 protein sequence Red =Cloning site Green =Tags(s) MMPSRTNLATGIPSSKVKYSRLSSTDDGYIDLQFKKTPPKIPYKAIALATVLFILIGAFLLIIGSLLLSGY ISKGGADRAVPVLIIGILVFLPGFYHLRIAYYASKGYRAYSYDDIPDFDD TRTRPLEQKLISEEDLAANDILDYKDDDDKV
Tag:	C-Myc/DDK
Predicted MW:	13 kDa
Concentration:	>0.05 µg/µL as determined by microplate BCA method
Purity:	> 80% as determined by SDS-PAGE and Coomassie blue staining
Buffer:	25 mM Tris-HCl, 100 mM glycine, pH 7.3, 10% glycerol
Preparation:	Recombinant protein was captured through anti-DDK affinity column followed by conventional chromatography steps.
Note:	For testing in cell culture applications, please filter before use. Note that you may experience some loss of protein during the filtration process.
Storage:	Store at -80°C.
Stability:	Stable for 12 months from the date of receipt of the product under proper storage and handling conditions. Avoid repeated freeze-thaw cycles.
RefSeq:	NP_001009924
Locus ID:	29058
UniProt ID:	Q96A57
RefSeq Size:	1792



[View online »](#)

Cytogenetics: 20p13-p12.3

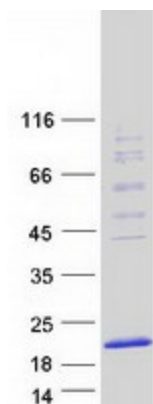
RefSeq ORF: 360

Synonyms: C20orf30; dj1116H23.2.1; HSPC274

Summary: This gene encodes a multi-pass transmembrane protein that belongs to the TMEM134/TMEM230 protein family. The encoded protein localizes to secretory and recycling vesicle in the neuron and may be involved in synaptic vesicles trafficking and recycling. Mutations in this gene may be linked to familial Parkinson's disease. [provided by RefSeq, Mar 2017]

Protein Families: Transmembrane

Product images:



Coomassie blue staining of purified TMEM230 protein (Cat# [TP313024]). The protein was produced from HEK293T cells transfected with TMEM230 cDNA clone (Cat# [RC213024]) using MegaTran 2.0 (Cat# [TT210002]).