

## Product datasheet for TP313007M

### CPT1C (NM\_152359) Human Recombinant Protein

#### Product data:

Product Type:	Recombinant Proteins
Description:	Recombinant protein of human carnitine palmitoyltransferase 1C (CPT1C), transcript variant 2, 100 µg
Species:	Human
Expression Host:	HEK293T
Expression cDNA	>RC213007 representing NM_152359
Clone or AA Sequence:	Red=Cloning site Green=Tags(s)

MAEAHQAVGFRPSLTS DGAEVELSAPVLQEIYLSGLRSWKRHLSRFWNDFLTGVFPASPLSWLFLFSAIQ  
LAWFLQLDPSLGLMEKIKELLPDWGGQHHGLRGVLAALFASCLWGALIFTLHVALRLLLSYHGWLLEPH  
GAMSSPTKTWLAALVRIFSGRHPMLFSYQRSLRPQVPVSVQDTRKYLESVRPILSDEDFDWTAVLAQEFL  
RLQASLLQWYLRKSWWASNYVSDWWEFVYLRSRNPLMVNSNYMMDFLYVTPPTLQAARAGNAVHALL  
LYRHRLNRQEIPPTLLMGMRPLCSAQYEKIFNTTRIPGVQKDYIRHLHDSQHVAVFHRGRFFRMGTHSRN  
SLLSPRALEQQFQRILDDPSPACPHEEHLAALTAAPRGTWAQVRTSLKTQAAEALAVEGAFFVSLDAE  
PAGLTREDPAASLDAYAHALLAGRGHDRWFDKSFLLIVFSNGKLGSLVEHSWADCPISGHMWEFTLATEC  
FQLGYSTDGHCKGHPDPTLPQPQLQWDLPDQIHSSISLALRGAKILSENVDCHVVPFSLFGKSFIRRC  
LSSDSFIQIALQLAHRDRGQFCLTYESAMTRFLFEGRTETVRSCTREACNFVRAMEDKEKTDQPCLALF  
RVAVDKHQALLKAAMSGQGVDRLHFALYIVSRFLHLQSPFLTQVHSEQWQLSTSQIPVQQMHLFDVHNYP  
DYVSSGGGFGPADDHGYGVSYIFMGDGMITFHSSKKSSTKTDSHRLGQHIEDALLDVASLFQAGQHFKR  
RFRGSGKENSRRHRCGFLSRQTGASKASMTSTDF

TRTRPLEQKLISEEDLAANDILDYKDDDDKV

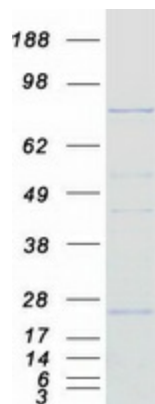
Tag:	C-Myc/DDK
Predicted MW:	90.8 kDa
Concentration:	>0.05 µg/µL as determined by microplate BCA method
Purity:	> 80% as determined by SDS-PAGE and Coomassie blue staining
Buffer:	25 mM Tris-HCl, 100 mM glycine, pH 7.3, 10% glycerol
Preparation:	Recombinant protein was captured through anti-DDK affinity column followed by conventional chromatography steps.



[View online »](#)

<b>Note:</b>	For testing in cell culture applications, please filter before use. Note that you may experience some loss of protein during the filtration process.
<b>Storage:</b>	Store at -80°C.
<b>Stability:</b>	Stable for 12 months from the date of receipt of the product under proper storage and handling conditions. Avoid repeated freeze-thaw cycles.
<b>RefSeq:</b>	<a href="#">NP_689572</a>
<b>Locus ID:</b>	126129
<b>UniProt ID:</b>	<a href="#">Q8TCG5</a> , <a href="#">A0A024QZE3</a>
<b>RefSeq Size:</b>	2772
<b>Cytogenetics:</b>	19q13.33
<b>RefSeq ORF:</b>	2409
<b>Synonyms:</b>	CATL1; CPT1-B; CPT1P; CPTI-B; CPTIC; SPG73
<b>Summary:</b>	This gene encodes a member of the carnitine/choline acetyltransferase family. The encoded protein regulates the beta-oxidation and transport of long-chain fatty acids into mitochondria, and may play a role in the regulation of feeding behavior and whole-body energy homeostasis. Alternatively spliced transcript variants encoding multiple protein isoforms have been observed for this gene. [provided by RefSeq, Dec 2010]
<b>Protein Families:</b>	Druggable Genome, Transmembrane
<b>Protein Pathways:</b>	Adipocytokine signaling pathway, Fatty acid metabolism, PPAR signaling pathway

### Product images:



Coomassie blue staining of purified CPT1C protein (Cat# [TP313007]). The protein was produced from HEK293T cells transfected with CPT1C cDNA clone (Cat# [RC213007]) using MegaTran 2.0 (Cat# [TT210002]).