

Product datasheet for **TP313007**

CPT1C (NM_152359) Human Recombinant Protein

Product data:

| | |
|-----------------------|---|
| Product Type: | Recombinant Proteins |
| Description: | Recombinant protein of human carnitine palmitoyltransferase 1C (CPT1C), transcript variant 2, 20 µg |
| Species: | Human |
| Expression Host: | HEK293T |
| Expression cDNA | >RC213007 representing NM_152359 |
| Clone or AA Sequence: | Red=Cloning site Green=Tags(s) |

MAEAHQAVGFRPSLTSDGAEVELSAPVLQEIYLSGLRSWKRLSRFWNDFLTGVFPASPLSWLFLFSAIQ
LAWFLQLDPSLGLMEKIKELLPDWGGQHHGLRGVLAALFASCLWGALIFTLHVALRLLLSYHGWLLEPH
GAMSSPTKTWLAIVRIFSGRHPMLFSYQRSLPRQPVPSVQDTRKYLESVRPILSDEDFDWTAVLAQEFL
RLQASLLQWYLRKSWWASNYVSDWWEFVYLSRNPLMVNSNYMMDFLYVTPPLQAARAGNAVHALL
LYRHLNRQEIPPTLLMGMRLCSAQYEKIFNTTRIPGVQKDYIRHLHDSQHVAVFHRGRFFRMGTHSRN
SLLSPRALEQQFQRLDDPSPACPHEEHLAALTAAPRGTTAQVRTSLKTQAAEAEAVEGAFFVSLDAE
PAGLTREDPAASLDAYAHALLAGRGHDFKSTLIVFSNGKLGLSVEHSWADCPISGHMWEFTLATEC
FQLGYSTDGHCKGHPDPTLPQQRQLQWDLPDQIHSSISLALRGAKILSENVDCHVVPFSLFGKSFIRRC
LSSDSFIQIALQLAHFRDRGQFCLTYESAMTRFLFEGRTETVRSCTREACNFVRAMEDKEKTDQPCLALF
RVAVDKHQALLKAAMSGQGVDRHLFALYIVSRFLHLQSPFLTQVHSEQWQLSTSQIPVQQMHLFDVHNYP
DYVSSGGGFGPADDHGYGVSYIFMGDGMITFHSSKKSSTKTDSHRLGQHIEDALLDVASLFQAGQHFKR
RFRGSGKENSRRHRCGFLSRQTGASKASMTSTDF

TRTRPLEQKLISEEDLAANDILDYKDDDDKV

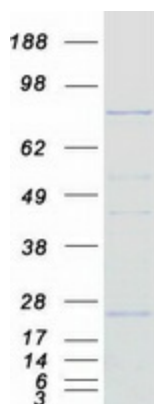
| | |
|----------------|--|
| Tag: | C-Myc/DDK |
| Predicted MW: | 90.8 kDa |
| Concentration: | >0.05 µg/µL as determined by microplate BCA method |
| Purity: | > 80% as determined by SDS-PAGE and Coomassie blue staining |
| Buffer: | 25 mM Tris-HCl, 100 mM glycine, pH 7.3, 10% glycerol |
| Preparation: | Recombinant protein was captured through anti-DDK affinity column followed by conventional chromatography steps. |



[View online »](#)

| | |
|--------------------------|--|
| Note: | For testing in cell culture applications, please filter before use. Note that you may experience some loss of protein during the filtration process. |
| Storage: | Store at -80°C. |
| Stability: | Stable for 12 months from the date of receipt of the product under proper storage and handling conditions. Avoid repeated freeze-thaw cycles. |
| RefSeq: | NP_689572 |
| Locus ID: | 126129 |
| UniProt ID: | Q8TCG5 , A0A024QZE3 |
| RefSeq Size: | 2772 |
| Cytogenetics: | 19q13.33 |
| RefSeq ORF: | 2409 |
| Synonyms: | CATL1; CPT1-B; CPT1P; CPTI-B; CPTIC; SPG73 |
| Summary: | This gene encodes a member of the carnitine/choline acetyltransferase family. The encoded protein regulates the beta-oxidation and transport of long-chain fatty acids into mitochondria, and may play a role in the regulation of feeding behavior and whole-body energy homeostasis. Alternatively spliced transcript variants encoding multiple protein isoforms have been observed for this gene. [provided by RefSeq, Dec 2010] |
| Protein Families: | Druggable Genome, Transmembrane |
| Protein Pathways: | Adipocytokine signaling pathway, Fatty acid metabolism, PPAR signaling pathway |

Product images:



Coomassie blue staining of purified CPT1C protein (Cat# TP313007). The protein was produced from HEK293T cells transfected with CPT1C cDNA clone (Cat# [RC213007]) using MegaTran 2.0 (Cat# [TT210002]).