

## Product datasheet for TP313000L

### C1QL2 (NM\_182528) Human Recombinant Protein

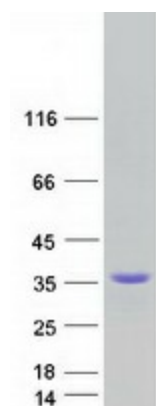
#### Product data:

Product Type:	Recombinant Proteins
Description:	Recombinant protein of human complement component 1, q subcomponent-like 2 (C1QL2), 1 mg
Species:	Human
Expression Host:	HEK293T
Expression cDNA Clone or AA Sequence:	>RC213000 representing NM_182528 <b>Red</b> =Cloning site <b>Green</b> =Tags(s)  MALGLLIAVPLLLQAAPRGAAHYEMMGTCRMICDPYTAAPGGEPGAKAQPPGPSTAALEVMQDLSANP P PPFIQGPKGDPGRPGKPGPRGPPGEPGPPGPRGPPGEKGDSPGLPGLQLTAGTASGVGVGGGAGV GG DSEGEVTSALSATFSGPKIAFYVGLKSPHEGYEVLKFDDVVTNLGNHYDPTTGKFSCQVRGIYFFTYHIL MRGGDGTSMWADLCKNGQVRASAI AQDADQNYDYASNSVWLHLDSGDEVYVKLDGGKAHGNNNKY STFS GFLLYPD  <b>TRTRPLEQKLISEEDLAANDILDYKDDDDKV</b>
Tag:	C-Myc/DDK
Predicted MW:	29.3 kDa
Concentration:	>0.05 µg/µL as determined by microplate BCA method
Purity:	> 80% as determined by SDS-PAGE and Coomassie blue staining
Buffer:	25 mM Tris-HCl, 100 mM glycine, pH 7.3, 10% glycerol
Preparation:	Recombinant protein was captured through anti-DDK affinity column followed by conventional chromatography steps.
Note:	For testing in cell culture applications, please filter before use. Note that you may experience some loss of protein during the filtration process.
Storage:	Store at -80°C.


[View online »](#)

<b>Stability:</b>	Stable for 12 months from the date of receipt of the product under proper storage and handling conditions. Avoid repeated freeze-thaw cycles.
<b>RefSeq:</b>	<a href="#">NP_872334</a>
<b>Locus ID:</b>	165257
<b>UniProt ID:</b>	<a href="#">Q7Z5L3</a>
<b>RefSeq Size:</b>	2066
<b>Cytogenetics:</b>	2q14.2
<b>RefSeq ORF:</b>	861
<b>Synonyms:</b>	C1QTNF10; CTRP10
<b>Summary:</b>	May regulate the number of excitatory synapses that are formed on hippocampus neurons. Has no effect on inhibitory synapses (By similarity).[UniProtKB/Swiss-Prot Function]
<b>Protein Families:</b>	Secreted Protein

### Product images:



Coomassie blue staining of purified C1QL2 protein (Cat# [TP313000]). The protein was produced from HEK293T cells transfected with C1QL2 cDNA clone (Cat# [RC213000]) using MegaTran 2.0 (Cat# [TT210002]).