

Product datasheet for **TP312992L**

C6orf35 (TMEM242) (NM_018452) Human Recombinant Protein

Product data:

Product Type: Recombinant Proteins

Description: Recombinant protein of human chromosome 6 open reading frame 35 (C6orf35), 1 mg

Species: Human

Expression Host: HEK293T

**Expression cDNA Clone
or AA Sequence:** >RC212992 protein sequence
Red=Cloning site **Green**=Tags(s)

METAGAATGQPASGLEAPGSTNDRFLVKGKIFLGTVAAAGMLAGFITTLSLAKKKSPEWFNKGSMATAA
LPESGSSLALRALGWGSLYAWCGVGVISFAVWKALGVHSMNDFRSKMQSIFPTIPKNSESAVEWEETLKS
K

TRTRPLEQKLISEEDLAANDILDYKDDDDKV

Tag: C-Myc/DDK

Predicted MW: 14.6 kDa

Concentration: >0.05 µg/µL as determined by microplate BCA method

Purity: > 80% as determined by SDS-PAGE and Coomassie blue staining

Buffer: 25 mM Tris-HCl, 100 mM glycine, pH 7.3, 10% glycerol

Preparation: Recombinant protein was captured through anti-DDK affinity column followed by conventional chromatography steps.

Note: For testing in cell culture applications, please filter before use. Note that you may experience some loss of protein during the filtration process.

Storage: Store at -80°C.

Stability: Stable for 12 months from the date of receipt of the product under proper storage and handling conditions. Avoid repeated freeze-thaw cycles.

RefSeq: [NP_060922](#)

Locus ID: 729515

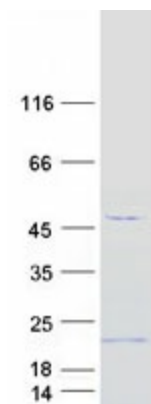
UniProt ID: [Q9NWH2](#)

RefSeq Size: 5084



[View online »](#)

Cytogenetics: 6q25.3
RefSeq ORF: 423
Synonyms: BM033; C6orf35
Protein Families: Transmembrane

Product images:

Coomassie blue staining of purified TMEM242 protein (Cat# [TP312992]). The protein was produced from HEK293T cells transfected with TMEM242 cDNA clone (Cat# [RC212992]) using MegaTran 2.0 (Cat# [TT210002]).