

Product datasheet for **TP312975L**

Macrophage inflammatory protein 5 (CCL15) (NM_032964) Human Recombinant Protein

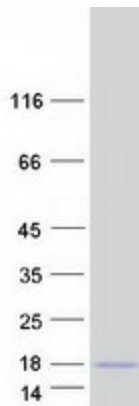
Product data:

Product Type:	Recombinant Proteins
Description:	Recombinant protein of human chemokine (C-C motif) ligand 15 (CCL15), transcript variant 1, 1 mg
Species:	Human
Expression Host:	HEK293T
Expression cDNA Clone or AA Sequence:	>RC212975 representing NM_032964 Red =Cloning site Green =Tags(s)
	MKVSVAALSCLMLVAVLGSQAQFTNDAETELMMSKLPLENPVVLSNFHFAADCCTSYISQSIPCSLMKSY FETSSECSKPGVIFLTKKGRQVCAKPSGPGVQDCMKKLPYSI
	TR TRPLEQKLISEEDLAANDILDYKDDDDKV
Tag:	C-Myc/DDK
Predicted MW:	12.7
Concentration:	>0.05 µg/µL as determined by microplate BCA method
Purity:	> 80% as determined by SDS-PAGE and Coomassie blue staining
Buffer:	25 mM Tris-HCl, 100 mM glycine, pH 7.3, 10% glycerol
Preparation:	Recombinant protein was captured through anti-DDK affinity column followed by conventional chromatography steps.
Note:	For testing in cell culture applications, please filter before use. Note that you may experience some loss of protein during the filtration process.
Storage:	Store at -80°C.
Stability:	Stable for 12 months from the date of receipt of the product under proper storage and handling conditions. Avoid repeated freeze-thaw cycles.
RefSeq:	NP_116740
Locus ID:	6359
UniProt ID:	Q16663
RefSeq Size:	1344



[View online »](#)

Cytogenetics:	17q12
RefSeq ORF:	339
Synonyms:	HCC-2; HMRP-2B; Lkn-1; LKN1; MIP-1d; MIP-5; NCC-3; NCC3; SCYA15; SCYL3; SY15
Summary:	This gene is located in a cluster of similar genes in the same region of chromosome 17. These genes encode CC cytokines, which are secreted proteins characterized by two adjacent cysteines. The product of this gene is chemotactic for T cells and monocytes, and acts through C-C chemokine receptor type 1 (CCR1). The proprotein is further processed into numerous smaller functional peptides. Naturally-occurring readthrough transcripts occur from this gene into the downstream gene, CCL14 (chemokine (C-C motif) ligand 14). [provided by RefSeq, Jan 2013]
Protein Families:	Druggable Genome, Secreted Protein, Transmembrane
Protein Pathways:	Chemokine signaling pathway, Cytokine-cytokine receptor interaction

Product images:

Coomassie blue staining of purified CCL15 protein (Cat# [TP312975]). The protein was produced from HEK293T cells transfected with CCL15 cDNA clone (Cat# [RC212975]) using MegaTran 2.0 (Cat# [TT210002]).