

Product datasheet for **TP312971L**

TAF1 48 (TAF1A) (NM_005681) Human Recombinant Protein

Product data:

Product Type: Recombinant Proteins

Description: Recombinant protein of human TATA box binding protein (TBP)-associated factor, RNA polymerase I, A, 48kDa (TAF1A), transcript variant 1, 1 mg

Species: Human

Expression Host: HEK293T

Expression cDNA Clone or AA Sequence: >RC212971 representing NM_005681
Red=Cloning site **Green**=Tags(s)

MSDFSEELKGPVTDDEEVETSVLSGAGMHFPWLQTYVETVAIGGKRRKDFQAQTTSACLSFIQEALLKHQW
QQAAEYMYSYFQTLESDSYKRQAAPEIHWKLGSEILFYHPKSNMESFNTFANRMKNIGVMNYLKISLQH
ALYLLHHGMLKDAKRNLSAETWRHGENTSSREILINLIQAYKGLLQYYTWSEKKMELSKLDKDDYAYNA
VAQDVFNHSWKTSANISALIKIPGVWDPFVKSIVEMLEFYGDRDGAQEVLTNAYAYDEKFPSPNNAHIYLY
NFLKRQKAPRSKLISVLKILYQIVPSHKLMLEFHTLLRKSEKEEHRKLGLEVLFGVLDFACTKNITAWK
YLAKYLNILMGNHLAWVQEEWNSRKNWWPGFHFYSYFWAKSDWKEDTALACEKAFVAGLLLGKGCYFRY
ILKQDHQILGKKIKRMKRSVKKYSIVNPRL

TRTRPLEQKLISEEDLAANDILDYKDDDDKV

Tag: C-Myc/DDK

Predicted MW: 52.5 kDa

Concentration: >0.05 µg/µL as determined by microplate BCA method

Purity: > 80% as determined by SDS-PAGE and Coomassie blue staining

Buffer: 25 mM Tris-HCl, 100 mM glycine, pH 7.3, 10% glycerol

Preparation: Recombinant protein was captured through anti-DDK affinity column followed by conventional chromatography steps.

Note: For testing in cell culture applications, please filter before use. Note that you may experience some loss of protein during the filtration process.

Storage: Store at -80°C.

Stability: Stable for 12 months from the date of receipt of the product under proper storage and handling conditions. Avoid repeated freeze-thaw cycles.



[View online »](#)

RefSeq: [NP_005672](#)

Locus ID: 9015

UniProt ID: [Q15573](#), [B4DS21](#)

RefSeq Size: 1893

Cytogenetics: 1q41

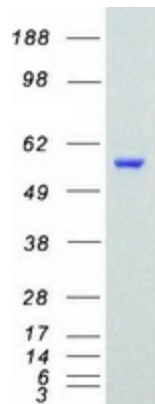
RefSeq ORF: 1350

Synonyms: MGC:17061; RAFI48; SL1; TAFI48

Summary: This gene encodes a subunit of the RNA polymerase I complex, Selectivity Factor I (SLI). The encoded protein is a TATA box-binding protein-associated factor that plays a role in the assembly of the RNA polymerase I preinitiation complex. Alternate splicing results in multiple transcript variants encoding multiple isoforms.[provided by RefSeq, Jan 2011]

Protein Families: Transcription Factors

Product images:



Coomassie blue staining of purified TAF1A protein (Cat# [TP312971]). The protein was produced from HEK293T cells transfected with TAF1A cDNA clone (Cat# [RC212971]) using MegaTran 2.0 (Cat# [TT210002]).