

## Product datasheet for **TP312971**

### TAF1 48 (TAF1A) (NM\_005681) Human Recombinant Protein

#### Product data:

**Product Type:** Recombinant Proteins

**Description:** Recombinant protein of human TATA box binding protein (TBP)-associated factor, RNA polymerase I, A, 48kDa (TAF1A), transcript variant 1, 20 µg

**Species:** Human

**Expression Host:** HEK293T

**Expression cDNA Clone or AA Sequence:** >RC212971 representing NM\_005681  
**Red**=Cloning site **Green**=Tags(s)

MSDFSEELKGPVTDDEEVETSVLSGAGMHFPWLQTYVETVAIGGKRRKDFQAQTTSACLSFIQEALLKHQW  
QQAAEYMYSYFQTLESDSYKRQAAPEIHWKLGSEILFYHPKSNMESFNTFANRMKNIGVMNYLKISLQH  
ALYLLHHGMLKDAKRNLSAETWRHGENTSSREILINLIQAYKGLLQYYTWSEKKMELSKLDKDDYAYNA  
VAQDVFNHSWKTSANISALIKIPGVWDPFVKSIVEMLEFYGDRDGAQEVLTNAYAYDEKFPSPNNAHIYLY  
NFLKRQKAPRSKLISVLKILYQIVPSHKLMLEFHTLLRKSEKEEHRKLGLEVLFGVLDFACTKNITAWK  
YLAKYLKNILMGNHLAWVQEEWNSRKNWWPGFHFYSYFWAKSDWKEDTALACEKAFVAGLLLGKGCYFRY  
ILKQDHQILGKKIKRMKRSVKKYSIVNPRL

**TRTRPLEQKLISEEDLAANDILDYKDDDDKV**

**Tag:** C-Myc/DDK

**Predicted MW:** 52.5 kDa

**Concentration:** >0.05 µg/µL as determined by microplate BCA method

**Purity:** > 80% as determined by SDS-PAGE and Coomassie blue staining

**Buffer:** 25 mM Tris-HCl, 100 mM glycine, pH 7.3, 10% glycerol

**Preparation:** Recombinant protein was captured through anti-DDK affinity column followed by conventional chromatography steps.

**Note:** For testing in cell culture applications, please filter before use. Note that you may experience some loss of protein during the filtration process.

**Storage:** Store at -80°C.

**Stability:** Stable for 12 months from the date of receipt of the product under proper storage and handling conditions. Avoid repeated freeze-thaw cycles.



[View online »](#)

RefSeq: [NP\\_005672](#)

Locus ID: 9015

UniProt ID: [Q15573](#), [B4DS21](#)

RefSeq Size: 1893

Cytogenetics: 1q41

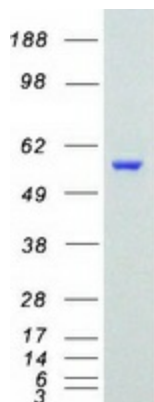
RefSeq ORF: 1350

Synonyms: MGC:17061; RAFI48; SL1; TAFI48

**Summary:** This gene encodes a subunit of the RNA polymerase I complex, Selectivity Factor I (SLI). The encoded protein is a TATA box-binding protein-associated factor that plays a role in the assembly of the RNA polymerase I preinitiation complex. Alternate splicing results in multiple transcript variants encoding multiple isoforms.[provided by RefSeq, Jan 2011]

**Protein Families:** Transcription Factors

### Product images:



Coomassie blue staining of purified TAF1A protein (Cat# TP312971). The protein was produced from HEK293T cells transfected with TAF1A cDNA clone (Cat# [RC212971]) using MegaTran 2.0 (Cat# [TT210002]).