

Product datasheet for **TP312947L**

FAM166A (NM_001001710) Human Recombinant Protein

Product data:

| | |
|--|---|
| Product Type: | Recombinant Proteins |
| Description: | Recombinant protein of human family with sequence similarity 166, member A (FAM166A), 1 mg |
| Species: | Human |
| Expression Host: | HEK293T |
| Expression cDNA Clone or AA Sequence: | >RC212947 protein sequence Red =Cloning site Green =Tags(s) MTTTQKHDLFTPEPHYVPGYAGFFPQLRYQVGNTYGRITGQLLTDPSPVQKSPCSVLSPMSKPKFIEDFSQ SKPPRVPCQDLTEPYIPHYTSLKPSKNFEILGQLPPLVDQAQEPGVENIPRQILLPAGFTPDPHPHPCP PGRKGDSRDLGHPVYGEEAWKSATPVCEAPRQHQLYHCQRDEYPPPARRQKETLDVGSFQRLPQLDHP NL IQRKAISGYAGFIPRFTWVMGLNYRDGVMQAMDEFDKSQFLFRNPHCDLGEKLPGTHWPSNHIYSSQGL I PFYMGFIPAMQDNYALTFGNSTRRAYWKEWAKRNHTL TRTRPLEQKLISEEDLAANDILDYKDDDDKV |
| Tag: | C-Myc/DDK |
| Predicted MW: | 36 kDa |
| Concentration: | >0.05 µg/µL as determined by microplate BCA method |
| Purity: | > 80% as determined by SDS-PAGE and Coomassie blue staining |
| Buffer: | 25 mM Tris-HCl, 100 mM glycine, pH 7.3, 10% glycerol |
| Preparation: | Recombinant protein was captured through anti-DDK affinity column followed by conventional chromatography steps. |
| Note: | For testing in cell culture applications, please filter before use. Note that you may experience some loss of protein during the filtration process. |
| Storage: | Store at -80°C. |
| Stability: | Stable for 12 months from the date of receipt of the product under proper storage and handling conditions. Avoid repeated freeze-thaw cycles. |



[View online »](#)

RefSeq: NP_001001710

Locus ID: 401565

UniProt ID: Q6J272

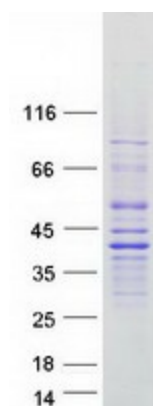
RefSeq Size: 1148

Cytogenetics: 9q34.3

RefSeq ORF: 951

Synonyms: HSD46

Product images:



Coomassie blue staining of purified FAM166A protein (Cat# [TP312947]). The protein was produced from HEK293T cells transfected with FAM166A cDNA clone (Cat# [RC212947]) using MegaTran 2.0 (Cat# [TT210002]).