

## Product datasheet for TP312947

### FAM166A (NM\_001001710) Human Recombinant Protein

#### Product data:

Product Type:	Recombinant Proteins
Description:	Recombinant protein of human family with sequence similarity 166, member A (FAM166A), 20 µg
Species:	Human
Expression Host:	HEK293T
Expression cDNA Clone or AA Sequence:	>RC212947 protein sequence <b>Red</b> =Cloning site <b>Green</b> =Tags(s)

MTTTQKHDLFTPEPHYVPGYAGFFPQLRYQVGNTYGRITGQLLDPSVQKSPCSVLSPMSKPKFIEDFSQ  
SKPPRVPCQDLTEPYIPHYTSLKPSKNFEILGQLPPELVDAQEPGVENIPRQILLPAGFTPDTPHPPCP  
PGRKGDSRDLGHPVYGEEAWKSATPVCEAPRQHQLYHCQRDEYPPPARRQQTLDVGSFQRLPQLDHPNL  
IQRKAISGYAGFIPRFTWVMGLNYRDGVMQAMDEFDKSQFLFRNPHCDLGEKLPGTHWPSNHIYSSQGLI  
PFYMGFIPAMQDNYALTFGNSTRRAYWKEWAKRNHTL

**TRTRPLEQKLISEEDLAANDILDYKDDDDKV**

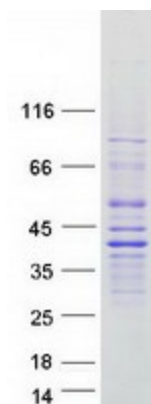
Tag:	C-Myc/DDK
Predicted MW:	36 kDa
Concentration:	>0.05 µg/µL as determined by microplate BCA method
Purity:	> 80% as determined by SDS-PAGE and Coomassie blue staining
Buffer:	25 mM Tris-HCl, 100 mM glycine, pH 7.3, 10% glycerol
Preparation:	Recombinant protein was captured through anti-DDK affinity column followed by conventional chromatography steps.
Note:	For testing in cell culture applications, please filter before use. Note that you may experience some loss of protein during the filtration process.
Storage:	Store at -80°C.
Stability:	Stable for 12 months from the date of receipt of the product under proper storage and handling conditions. Avoid repeated freeze-thaw cycles.
RefSeq:	<a href="#">NP_001001710</a>
Locus ID:	401565



[View online »](#)

UniProt ID: [Q6J272](#)  
RefSeq Size: 1148  
Cytogenetics: 9q34.3  
RefSeq ORF: 951  
Synonyms: HSD46

### Product images:



Coomassie blue staining of purified FAM166A protein (Cat# TP312947). The protein was produced from HEK293T cells transfected with FAM166A cDNA clone (Cat# [RC212947]) using MegaTran 2.0 (Cat# [TT210002]).