

Product datasheet for **TP312939**

LRRN4CL (NM_203422) Human Recombinant Protein

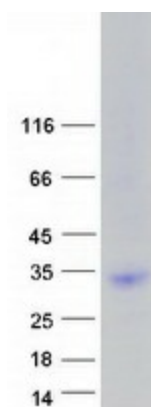
Product data:

Product Type:	Recombinant Proteins
Description:	Purified recombinant protein of Homo sapiens LRRN4 C-terminal like (LRRN4CL), 20 µg
Species:	Human
Expression Host:	HEK293T
Expression cDNA Clone or AA Sequence:	>RC212939 representing NM_203422 Red =Cloning site Green =Tags(s)
	 MLGSPCLLWLLAVTFLVPRAQPLAPQDFEEEEADETETAWPPLPAVPCDYDHCRLQVPCKELQRVGPAA CLCPGLSSPAQPPDPPRMGEVRIAAEEGRAVHWCAPFSPVLHYWLLLWDGSEAAQKGPPLNATVRRRAEL KGLKPGGIYVVCVAANEAGASRVPQAGGEGLEGADIPAFGPCSRLAVPPNPRTLVAHAVGVGTALALLS CAALVWHFCLDRWGCPRRAAARAAGAL TRTRPLEQKLISEEDLAANDILDYKDDDDKV
Tag:	C-Myc/DDK
Predicted MW:	25.1 kDa
Concentration:	>0.05 µg/µL as determined by microplate BCA method
Purity:	> 80% as determined by SDS-PAGE and Coomassie blue staining
Buffer:	25 mM Tris-HCl, 100 mM glycine, pH 7.3, 10% glycerol
Preparation:	Recombinant protein was captured through anti-DDK affinity column followed by conventional chromatography steps.
Note:	For testing in cell culture applications, please filter before use. Note that you may experience some loss of protein during the filtration process.
Storage:	Store at -80°C.
Stability:	Stable for 12 months from the date of receipt of the product under proper storage and handling conditions. Avoid repeated freeze-thaw cycles.
RefSeq:	<u>NP_981967</u>
Locus ID:	221091
UniProt ID:	<u>Q8ND94</u>



[View online »](#)

RefSeq Size: 2429
Cytogenetics: 11q12.3
RefSeq ORF: 714
Protein Families: Transmembrane

Product images:

Coomassie blue staining of purified LRRN4CL protein (Cat# TP312939). The protein was produced from HEK293T cells transfected with LRRN4CL cDNA clone (Cat# [RC212939]) using MegaTran 2.0 (Cat# [TT210002]).