

Product datasheet for **TP312918M**

PPM1B (NM_002706) Human Recombinant Protein

Product data:

Product Type:	Recombinant Proteins
Description:	Recombinant protein of human protein phosphatase 1B (formerly 2C), magnesium-dependent, beta isoform (PPM1B), transcript variant 1, 100 µg
Species:	Human
Expression Host:	HEK293T
Expression cDNA Clone or AA Sequence:	>RC212918 representing NM_002706 Red =Cloning site Green =Tags(s)
	<p>MGAFLDKPKTEKHNAHGAGNGLRYGLSSMQGWRVEMEDAHTAVVGIPHGLEDWSFFAVYDGHAGSRVANY CSTHLLHITTNEFDRAAGKSGSALELSVENVKNGIRTGFLKIDEYMRNFSDLRNGMDRSGSTAVGVMIS PKHIYFINGCDSRAVLYRNGQVCFSTQDHKPCNPREKERIQNAGGSVMIQRVNGSLAVSRALGDYDYKCV DGKGPTEQLVSPPEPEVEILRAEEDFIILACDGIWDVMSNEELCEYVKSRLVSDDLNVCNWWVDTCL HKGSRDNMSIVLVCFSNAPKVSDEAVKKDSELDKHLESRVEEIMEKSGEEMPDLAHV MRILSAENIPNL PPGGGLAGKRNVIEAVYSRLNPHRES DGASDEAEESGSGKLV EALRQMRINH RGN YRQLLEEMLT SYRL AKVEGEESPAEPAATATSSNSDAGNPVTMQESHTESEGLAELDSSNEDAGTKMSGEKI</p> <p>TRTRPLEQKLISEEDLAANDILDYKDDDDKV</p>
Tag:	C-Myc/DDK
Predicted MW:	52.5 kDa
Concentration:	>0.05 µg/µL as determined by microplate BCA method
Purity:	> 80% as determined by SDS-PAGE and Coomassie blue staining
Buffer:	25 mM Tris-HCl, 100 mM glycine, pH 7.3, 10% glycerol
Preparation:	Recombinant protein was captured through anti-DDK affinity column followed by conventional chromatography steps.
Note:	For testing in cell culture applications, please filter before use. Note that you may experience some loss of protein during the filtration process.
Storage:	Store at -80°C.
Stability:	Stable for 12 months from the date of receipt of the product under proper storage and handling conditions. Avoid repeated freeze-thaw cycles.



[View online »](#)

RefSeq: [NP_002697](#)

Locus ID: 5495

UniProt ID: [O75688](#)

RefSeq Size: 2605

Cytogenetics: 2p21

RefSeq ORF: 1437

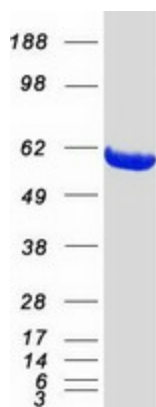
Synonyms: PP2C-beta; PP2C-beta-X; PP2CB; PP2CBETA; PPC2BETAX

Summary: The protein encoded by this gene is a member of the PP2C family of Ser/Thr protein phosphatases. PP2C family members are known to be negative regulators of cell stress response pathways. This phosphatase has been shown to dephosphorylate cyclin-dependent kinases (CDKs), and thus may be involved in cell cycle control. Overexpression of this phosphatase is reported to cause cell-growth arrest or cell death. Alternative splicing results in multiple transcript variants encoding different isoforms. Additional transcript variants have been described, but currently do not represent full-length sequences. [provided by RefSeq, Jul 2008]

Protein Families: Druggable Genome, Phosphatase, Stem cell - Pluripotency

Protein Pathways: MAPK signaling pathway

Product images:



Coomassie blue staining of purified PPM1B protein (Cat# [TP312918]). The protein was produced from HEK293T cells transfected with PPM1B cDNA clone (Cat# [RC212918]) using MegaTran 2.0 (Cat# [TT210002]).