

## Product datasheet for TP312893M

### Liprin alpha 1 (PPFIA1) (NM\_177423) Human Recombinant Protein

#### Product data:

**Product Type:** Recombinant Proteins  
**Description:** Recombinant protein of human protein tyrosine phosphatase, receptor type, f polypeptide (PTPRF), interacting protein (liprin), alpha 1 (PPFIA1), transcript variant 1, 100 µg  
**Species:** Human  
**Expression Host:** HEK293T  
**Expression cDNA** >RC212893 representing NM\_177423  
**Clone or AA Sequence:** **Red**=Cloning site **Green**=Tags(s)

MMCEVMPTISEAEGPPGGGGHGGSGSPSQPDADSHFEQLMVSMLEERDRLLDRTLRETQETLALTQGKLHE  
 VGHERDSLQRQLNTALPQFAALTKELNVCREQLLEREEEEIAELKAERNNTRLLLEHLECLVSRHERSLR  
 MTVVKRQAQSPAGVSSEVEVLKALKSLFEHHKALDEKVRERLRVALERCSSLEELGATHKELMILKEQN  
 NQKKTLDGVLNHEQENTPSTSGKRSSDGSLSHEEDLAKVIELQEIISKQSREQSQMKERLASLSSHV  
 TELEEDLDTARKDLIKSEEMNTKLQRDVREAMAQKEDMEERITTLKRYLAAQREATSVDLNDKLENEI  
 ANKDSMHRQTEDKNRQLQERLELAEQKLQQLRKAETLPEVEAELAQVAALSKAERHGNIEERLRQME  
 AQLEEKQELQRRARQREKMNEEHNRKLSDTVDKLLSESNERLQLHLKERMAALEDKNSLLREVESAKKQL  
 EETQHDKDQLVLNIEALRAELDHMRLRGASLHHGRPHLGSVPDFRFPMDAGHTDSYSTSAVLRPQKGR  
 AALRDEPSKVQTLNEQDWERAAQASVLNVAQAFESDADVSDGEDDRDRLSSVDLLSPSGQADAHTLAM  
 MLQEQLDAINKEIRLIQEEKENTEQRAEEIESRVGSGSLDNLGRFRSMSSIPPYPASSLASSPPGSGRS  
 TPRRIPHSPAREVDRLGVMTELLPPSREEVRDDKTTIKCETSPSSPRALRLDRLHKGALHTVSHEDIRDI  
 RNSTGSQDGPVSNPSSNSQDSLHKAPKKKGIKSSIGRFLFGKKEKGRPGQTGKEALGQAGVSETDNSSQ  
 DALGLSKLGGQAEKNRKLQKKHELLEARRQGLPFAQWDGPTWWWLELWVGMPAWYVAACRANVKSGAI  
 MSALSDTEIQREIGISNPLHRLKRLAIQEIIMSLTSPSAPPTSRTTLAYGDMNHEWIGNEWPLSLGLPQY  
 RSYFMECLVDARMLDHLTKKDLRGQLKMOVDFHRNSFQCGIMCLRRNLNDRKELERKREESQSEIKDVLV  
 WSNDRVIRWILSIGLKEYANNLIESGVHGALLALDETFDFSALALLLQIPTQNTQARAVLEREFNLLVM  
 GTDRRFDEDDDKSFRRAPSWRKKFRPKDIRGLAAGSAETLPANFRVTSSMSSPSMQPKKMQMDGM

**TRTRPLEQKLISEEDLAANDILDYKDDDDKV**

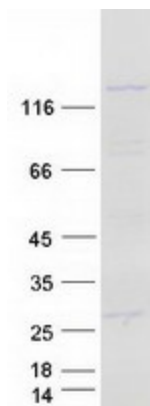
**Tag:** C-Myc/DDK  
**Predicted MW:** 133.8 kDa  
**Concentration:** >0.05 µg/µL as determined by microplate BCA method  
**Purity:** > 80% as determined by SDS-PAGE and Coomassie blue staining



[View online »](#)

<b>Buffer:</b>	25 mM Tris-HCl, 100 mM glycine, pH 7.3, 10% glycerol
<b>Preparation:</b>	Recombinant protein was captured through anti-DDK affinity column followed by conventional chromatography steps.
<b>Note:</b>	For testing in cell culture applications, please filter before use. Note that you may experience some loss of protein during the filtration process.
<b>Storage:</b>	Store at -80°C.
<b>Stability:</b>	Stable for 12 months from the date of receipt of the product under proper storage and handling conditions. Avoid repeated freeze-thaw cycles.
<b>RefSeq:</b>	<a href="#">NP_803172</a>
<b>Locus ID:</b>	8500
<b>UniProt ID:</b>	<a href="#">Q13136</a>
<b>RefSeq Size:</b>	3945
<b>Cytogenetics:</b>	11q13.3
<b>RefSeq ORF:</b>	3555
<b>Synonyms:</b>	LIP.1; LIP1; LIPRIN
<b>Summary:</b>	The protein encoded by this gene is a member of the LAR protein-tyrosine phosphatase-interacting protein (liprin) family. Liprins interact with members of LAR family of transmembrane protein tyrosine phosphatases, which are known to be important for axon guidance and mammary gland development. This protein binds to the intracellular membrane-distal phosphatase domain of tyrosine phosphatase LAR, and appears to localize LAR to cell focal adhesions. This interaction may regulate the disassembly of focal adhesion and thus help orchestrate cell-matrix interactions. Alternatively spliced transcript variants encoding distinct isoforms have been described. [provided by RefSeq, Jul 2008]
<b>Protein Families:</b>	Druggable Genome, Phosphatase

### Product images:



Coomassie blue staining of purified PPFIA1 protein (Cat# [TP312893]). The protein was produced from HEK293T cells transfected with PPFIA1 cDNA clone (Cat# [RC212893]) using MegaTran 2.0 (Cat# [TT210002]).