

Product datasheet for **TP312883M**

SCYL1BP1 (GORAB) (NM_152281) Human Recombinant Protein

Product data:

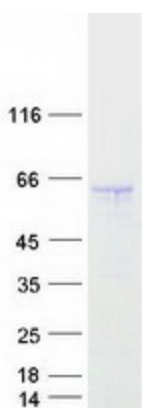
Product Type:	Recombinant Proteins
Description:	Recombinant protein of human golgin, RAB6-interacting (GORAB), 100 µg
Species:	Human
Expression Host:	HEK293T
Expression cDNA Clone or AA Sequence:	>RC212883 representing NM_152281 Red =Cloning site Green =Tags(s)
	MSWAAVLAVAAARFGHFWGCRWPGPMAQGWAGFSEEELRRLKQTKDPFEPQRRLLPAKKSRRQQLQREKALV EQSQKLGQLQDGSTLLPEQLLSAPKQQRVNVQKPPFSSPTLPSHFTLTSPVGDGQPQGIESQPKELGLENS HDGHNNVEILPPKPDCKLEKKKVELQEKSWEVLQQEQRLMEEKNKRRKALLAKAIAERSKRTQAETMKL KRIQKELQALDDMVSADIGILRNRIDQASLDYSYARKRFDRAEAEYIAAKLDIQRKTEIKEQLTEHLCTI IQQNELRKAKKLEELMQQLDVEADEETLELEVEVERLLHEQEVESSRRPVVRLERPFQPAEESVTLEFAKE NRKCQEAVSPKVDDQCGNSSSIPFLSPNCPNQEGNDISAALAT
	TRTRPLEQKLISEEDLAANDILDYKDDDDKV
Tag:	C-Myc/DDK
Predicted MW:	44.8 kDa
Concentration:	>0.05 µg/µL as determined by microplate BCA method
Purity:	> 80% as determined by SDS-PAGE and Coomassie blue staining
Buffer:	25 mM Tris-HCl, 100 mM glycine, pH 7.3, 10% glycerol
Preparation:	Recombinant protein was captured through anti-DDK affinity column followed by conventional chromatography steps.
Note:	For testing in cell culture applications, please filter before use. Note that you may experience some loss of protein during the filtration process.
Storage:	Store at -80°C.
Stability:	Stable for 12 months from the date of receipt of the product under proper storage and handling conditions. Avoid repeated freeze-thaw cycles.
RefSeq:	NP_689494
Locus ID:	92344



[View online »](#)

UniProt ID:	<u>Q5T7V8</u> , <u>B3KQ87</u>
RefSeq Size:	2186
Cytogenetics:	1q24.2
RefSeq ORF:	1182
Synonyms:	GO; NTKLBP1; SCYL1BP1
Summary:	This gene encodes a member of the golgin family, a group of coiled-coil proteins localized to the Golgi. The encoded protein may function in the secretory pathway. The encoded protein, which also localizes to the cytoplasm, was identified by interactions with the N-terminal kinase-like protein, and thus it may function in mitosis. Mutations in this gene have been associated with geroderma osteodysplastica. Alternatively spliced transcript variants have been described. [provided by RefSeq, Mar 2009]

Product images:



Coomassie blue staining of purified GORAB protein (Cat# [TP312883]). The protein was produced from HEK293T cells transfected with GORAB cDNA clone (Cat# [RC212883]) using MegaTran 2.0 (Cat# [TT210002]).