

## Product datasheet for **TP312874L**

### **MAGEB10 (NM\_182506) Human Recombinant Protein**

#### **Product data:**

Product Type:	Recombinant Proteins
Description:	Recombinant protein of human melanoma antigen family B, 10 (MAGEB10), 1 mg
Species:	Human
Expression Host:	HEK293T
Expression cDNA Clone or AA Sequence:	>RC212874 protein sequence <b>Red</b> =Cloning site <b>Green</b> =Tags(s)
	<p>MPRGQKSKLRAREKRRQARGGLEDLIDALDILEEEEEPPPSASACLKDVQSSSLDGASNNPHGLQEAQST STSATAASHTRHPEGVNDQMEERPICTQDLEATDSFPRGPVDEKVILVHYLLYKYQMKEPITKADMLRN VTQMSKSQFPVILSRASEHLELIFGLDLKEVEPNKHIVLVNKLDLGCDAKLSDETGVPKTGLLMTVLGI IFTNGNCVAEEEEVWKVFNTMGLYDGIHFMFGEPKLLTKDLVKENYLEYQQVPNSDPPRYQFLWGPRA H AETSKMKVLEFLAKVNDTAPSEFSNWyTEALQDEEERARARVAAKARVSATAGARSKVKSSKSSQLQ</p> <p><b>TRTRPLEQKLISEEDLAANDILDYKDDDDKV</b></p>
Tag:	C-Myc/DDK
Predicted MW:	38.8 kDa
Concentration:	>0.05 µg/µL as determined by microplate BCA method
Purity:	> 80% as determined by SDS-PAGE and Coomassie blue staining
Buffer:	25 mM Tris-HCl, 100 mM glycine, pH 7.3, 10% glycerol
Preparation:	Recombinant protein was captured through anti-DDK affinity column followed by conventional chromatography steps.
Note:	For testing in cell culture applications, please filter before use. Note that you may experience some loss of protein during the filtration process.
Storage:	Store at -80°C.
Stability:	Stable for 12 months from the date of receipt of the product under proper storage and handling conditions. Avoid repeated freeze-thaw cycles.
RefSeq:	<u><a href="#">NP_872312</a></u>
Locus ID:	139422



[View online »](#)

UniProt ID: Q96LZ2

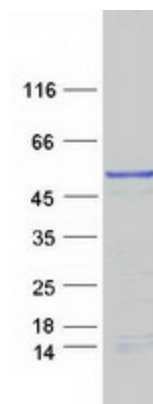
RefSeq Size: 1953

Cytogenetics: Xp21.3

RefSeq ORF: 1041

**Summary:** This gene encodes a member of the B subfamily of the melanoma associated antigen protein family. The encoded protein is specifically expressed in testis and tumor cells. [provided by RefSeq, Apr 2010]

## Product images:



Coomassie blue staining of purified MAGEB10 protein (Cat# [TP312874]). The protein was produced from HEK293T cells transfected with MAGEB10 cDNA clone (Cat# [RC212874]) using MegaTran 2.0 (Cat# [TT210002]).