

Product datasheet for TP312775

ICAM2 (NM_001099789) Human Recombinant Protein

Product data:

Product Type:	Recombinant Proteins
Description:	Purified recombinant protein of Homo sapiens intercellular adhesion molecule 2 (ICAM2), transcript variant 4, 20 µg
Species:	Human
Expression Host:	HEK293T
Expression cDNA Clone or AA Sequence:	>RC212775 protein sequence Red=Cloning site Green=Tags(s)

MSSFGYRTLTVLFTLICCPGSDEKVFVHVRPKKLAVEPKGSLEVNCSTTCNQPEVGGLETSLDKILLD
EQAQWKHYLVSNIHDTVLCQCHFTCSGKQESMNSNVSVYQPPRQVILTLQPTLVAVGKSFTIECRVPTVE
PLDSLTLFLFRGNETHYETFGKAAPAPQEATATFNSTADREDGHRNFSCLAVLDLMSRGGNIFHKHSAP
KMLEIYEPVSDSQMVIIVTVSVLLSLFVTSVLLCFIFGQHLRQQRMGTYGVRAAWRRLPQAFRP

TRTRPLEQKLISEEDLAANDILDYKDDDDKV

Tag:	C-Myc/DDK
Predicted MW:	28.3 kDa
Concentration:	>0.05 µg/µL as determined by microplate BCA method
Purity:	> 80% as determined by SDS-PAGE and Coomassie blue staining
Buffer:	25 mM Tris-HCl, 100 mM glycine, pH 7.3, 10% glycerol
Preparation:	Recombinant protein was captured through anti-DDK affinity column followed by conventional chromatography steps.
Note:	For testing in cell culture applications, please filter before use. Note that you may experience some loss of protein during the filtration process.
Storage:	Store at -80°C.
Stability:	Stable for 12 months from the date of receipt of the product under proper storage and handling conditions. Avoid repeated freeze-thaw cycles.
RefSeq:	NP_001093259
Locus ID:	3384



[View online »](#)

UniProt ID: [P13598](#), [Q6FHE2](#)

RefSeq Size: 1153

Cytogenetics: 17q23.3

RefSeq ORF: 825

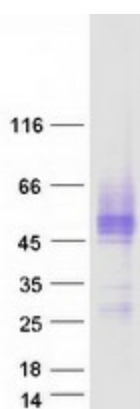
Synonyms: CD102

Summary: The protein encoded by this gene is a member of the intercellular adhesion molecule (ICAM) family. All ICAM proteins are type I transmembrane glycoproteins, contain 2-9 immunoglobulin-like C2-type domains, and bind to the leukocyte adhesion LFA-1 protein. This protein may play a role in lymphocyte recirculation by blocking LFA-1-dependent cell adhesion. It mediates adhesive interactions important for antigen-specific immune response, NK-cell mediated clearance, lymphocyte recirculation, and other cellular interactions important for immune response and surveillance. Several transcript variants encoding the same protein have been found for this gene. [provided by RefSeq, Jul 2008]

Protein Families: ES Cell Differentiation/IPS, Transmembrane

Protein Pathways: Cell adhesion molecules (CAMs), Natural killer cell mediated cytotoxicity

Product images:



Coomassie blue staining of purified ICAM2 protein (Cat# TP312775). The protein was produced from HEK293T cells transfected with ICAM2 cDNA clone (Cat# [RC212775]) using MegaTran 2.0 (Cat# [TT210002]).