

## Product datasheet for **TP312768M**

### **METTL1 (NM\_005371) Human Recombinant Protein**

#### **Product data:**

Product Type:	Recombinant Proteins
Description:	Recombinant protein of human methyltransferase like 1 (METTL1), transcript variant 1, 100 µg
Species:	Human
Expression Host:	HEK293T
Expression cDNA	>RC212768 representing NM_005371
Clone or AA Sequence:	Red=Cloning site Green=Tags(s)

MAAETRVAGAEAPPPQKRYRQRAHSNPMADHTLRYPVKPEEMDWSELYPEFFAPLTQNSHDDPKDKK  
EKRAQAQVEFADIGCGYGGLLVLSPLFPDTLILGLEIRVKVSDYVQDRIRALRAAPAGGFQNIACLRSN  
AMKHLNFFYKQQLTKMFFLPDPHFKRTKHKWRIISPTLLAEYAYVLRVGGGLVYTITDVLELHDWMCTH  
FEEHPLFERVPLEDLSQDPVVGHLGTSTEEGKKVLRNGGKNFPAIFRRIQDPVLQAVTSQTSPLPGH

TRTRPLEQKLISEEDLAANDILDYKDDDDKV

Tag:	C-Myc/DDK
Predicted MW:	31.3 kDa
Concentration:	>0.05 µg/µL as determined by microplate BCA method
Purity:	> 80% as determined by SDS-PAGE and Coomassie blue staining
Buffer:	25 mM Tris-HCl, 100 mM glycine, pH 7.3, 10% glycerol
Preparation:	Recombinant protein was captured through anti-DDK affinity column followed by conventional chromatography steps.
Note:	For testing in cell culture applications, please filter before use. Note that you may experience some loss of protein during the filtration process.
Storage:	Store at -80°C.
Stability:	Stable for 12 months from the date of receipt of the product under proper storage and handling conditions. Avoid repeated freeze-thaw cycles.
RefSeq:	<a href="#">NP_005362</a>
Locus ID:	4234
UniProt ID:	<a href="#">Q9UBP6</a>



[View online >](#)

RefSeq Size: 1743

Cytogenetics: 12q14.1

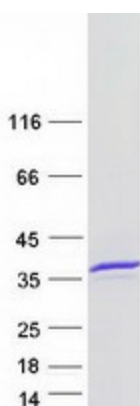
RefSeq ORF: 828

Synonyms: C12orf1; TRM8; TRMT8; YDL201w

**Summary:** This gene is similar in sequence to the *S. cerevisiae* YDL201w gene. The gene product contains a conserved S-adenosylmethionine-binding motif and is inactivated by phosphorylation. Alternative splice variants encoding different protein isoforms have been described for this gene. A pseudogene has been identified on chromosome X. [provided by RefSeq, Jul 2008]

**Protein Families:** Druggable Genome

### Product images:



Coomassie blue staining of purified METTL1 protein (Cat# [TP312768]). The protein was produced from HEK293T cells transfected with METTL1 cDNA clone (Cat# [RC212768]) using MegaTran 2.0 (Cat# [TT210002]).