

Product datasheet for **TP312752M**

SYTL3 (NM_001009991) Human Recombinant Protein

Product data:

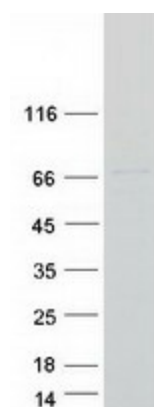
Product Type:	Recombinant Proteins
Description:	Recombinant protein of human synaptotagmin-like 3 (SYTL3), 100 µg
Species:	Human
Expression Host:	HEK293T
Expression cDNA Clone or AA Sequence:	>RC212752 protein sequence Red =Cloning site Green =Tags(s)
	<p>MAQEIDLSALKELEREAILQVLYRDQAVQNTEEERTRKLKTHLQHLRWKGAKNTDWEHKEKCCARCQQV L GFLLRGAVCRGCSHRVCAQCRVFLRGTHAWKCTVCFEDRNVKIKTGEWFYEERAKKFPTGGKHETVGG Q LLQSYQKLSKISVVPPTPPPVSESQCSRSPGRKVSAPDILKPLNQEDPKCSTNPILKQQNLPSAPSTI FSGGFRHGSLISIDSTCTEMGNFDNANVTGEIEFAIHYCFKTHSLEICIKACKNLAYGEEKKKCNPYVK TYLLPDRSSQGKRKTGVQRNTVDPTFQETLKYQVAPQLVTRQLQVSVWHLGTLARRVFLGEVIPLATW DFEDSTTSFRWHLRAKAEKYEDSVPQSNGLTVRAKLVLPSRPRKLQEAQEGTDQPSLHGQLCLVVLG AKNLPVRPDGTLNSFVKGCLTLPDQQKLRLKSPVLRKQACPQWKHSFVSGVTPAQLRQSSLELTVWDQ A LFGMNDRLGGLGTRLGSGDGTAVGGDACSQSKLQWQKVLSSPNLWTDMTLVLH</p> <p>TRTRPLEQKLISEEDLAANDILDYKDDDDKV</p>
Tag:	C-Myc/DDK
Predicted MW:	60.7 kDa
Concentration:	>0.05 µg/µL as determined by microplate BCA method
Purity:	> 80% as determined by SDS-PAGE and Coomassie blue staining
Buffer:	25 mM Tris-HCl, 100 mM glycine, pH 7.3, 10% glycerol
Preparation:	Recombinant protein was captured through anti-DDK affinity column followed by conventional chromatography steps.
Note:	For testing in cell culture applications, please filter before use. Note that you may experience some loss of protein during the filtration process.
Storage:	Store at -80°C.



[View online »](#)

Stability:	Stable for 12 months from the date of receipt of the product under proper storage and handling conditions. Avoid repeated freeze-thaw cycles.
RefSeq:	<u>NP_001009991</u>
Locus ID:	94120
UniProt ID:	<u>Q4VX76</u>
RefSeq Size:	2284
Cytogenetics:	6q25.3
RefSeq ORF:	1626
Synonyms:	SLP3
Summary:	The protein encoded by this gene belongs to a family of peripheral membrane proteins that play a role in vesicular trafficking. This protein binds phospholipids in the presence of calcium ions. Alternatively spliced transcript variants encoding different isoforms have been found for this gene. [provided by RefSeq, Jan 2016]

Product images:



Coomassie blue staining of purified SYTL3 protein (Cat# [TP312752]). The protein was produced from HEK293T cells transfected with SYTL3 cDNA clone (Cat# [RC212752]) using MegaTran 2.0 (Cat# [TT210002]).