

## Product datasheet for TP312752

### SYTL3 (NM\_001009991) Human Recombinant Protein

#### Product data:

Product Type:	Recombinant Proteins
Description:	Recombinant protein of human synaptotagmin-like 3 (SYTL3), 20 µg
Species:	Human
Expression Host:	HEK293T
Expression cDNA Clone or AA Sequence:	>RC212752 protein sequence Red=Cloning site Green=Tags(s)

MAQEIDLSALKELEAREAILQVLYRDQAVQNTTEEERTRKLKTHLQHLRWKGAKNTDWEHKEKCCARCQQVL  
GFLLRGAVCRGCSHRVCAQCRVFLRGTHAWKCTVCFEDRNVKIKTGEWFYEERAKKFPTGGKHETVGGQ  
LLQSYQKLSKISVVPPTPPPVSSESQCSRSPGRKVSAPDILKPLNQEDPKCSTNPILKQQLPSSPAPSTI  
FSGGFRHGSLISIDSTCTEMGNFDNANVTGIEFAIHCFKTHSLEICIKACKNLAYGEEKKKCNPYVK  
TYLLPDRSSQGKRKTGVQRNTVDPTFQETLKYQVAPAQLVTRQLQVSVWHLGLLARRVFLGEVIPLATW  
DFEDSTTQSFWRHPLRAKAKEYEDSVPQSNGELTVRAKLVLPSPRKLQEAQEGTDQPSLHGQLCLVLG  
AKNLPVRPDGTLNSFVKGCLTLPDQQLRLKSPVLRKQACPQWKHSFVFSVTPAQLRQSSLELTVWDQA  
LFGMNDRLGGTRLGSKGDTAVGGDACSQSKLQWQKVLSSPNLWTDMLVLH

TRTRPLEQKLISEEDLAANDILDYKDDDDKV

Tag:	C-Myc/DDK
Predicted MW:	60.7 kDa
Concentration:	>0.05 µg/µL as determined by microplate BCA method
Purity:	> 80% as determined by SDS-PAGE and Coomassie blue staining
Buffer:	25 mM Tris-HCl, 100 mM glycine, pH 7.3, 10% glycerol
Preparation:	Recombinant protein was captured through anti-DDK affinity column followed by conventional chromatography steps.
Note:	For testing in cell culture applications, please filter before use. Note that you may experience some loss of protein during the filtration process.
Storage:	Store at -80°C.
Stability:	Stable for 12 months from the date of receipt of the product under proper storage and handling conditions. Avoid repeated freeze-thaw cycles.



[View online »](#)

RefSeq: [NP\\_001009991](#)

Locus ID: 94120

UniProt ID: [Q4VX76](#)

RefSeq Size: 2284

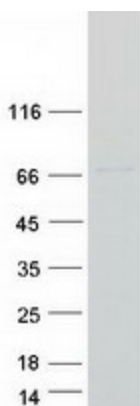
Cytogenetics: 6q25.3

RefSeq ORF: 1626

Synonyms: SLP3

**Summary:** The protein encoded by this gene belongs to a family of peripheral membrane proteins that play a role in vesicular trafficking. This protein binds phospholipids in the presence of calcium ions. Alternatively spliced transcript variants encoding different isoforms have been found for this gene. [provided by RefSeq, Jan 2016]

### Product images:



Coomassie blue staining of purified SYTL3 protein (Cat# TP312752). The protein was produced from HEK293T cells transfected with SYTL3 cDNA clone (Cat# [RC212752]) using MegaTran 2.0 (Cat# [TT210002]).