

## Product datasheet for **TP312744M**

### Parathyroid hormone related protein (PTH1H) (NM\_198966) Human Recombinant Protein

#### Product data:

Product Type:	Recombinant Proteins
Description:	Recombinant protein of human parathyroid hormone-like hormone (PTH1H), transcript variant 4, 100 µg
Species:	Human
Expression Host:	HEK293T
Expression cDNA Clone or AA Sequence:	>RC212744 representing NM_198966 <b>Red</b> =Cloning site <b>Green</b> =Tags(s)  MQRRLVQQWSVAVFLLSYAVPSCGRSVEGLSRRLKRAVSEHQLLHDKGKSIQDLRRRFFLHLLIAEIH TA EIRATSEVSPNSKSPNNTKNHPVRFSGSDDEGRYLTQETNKVETYKEQPLKTPGKKKGGKPGKRKEQEK K RRTRSAWLDSGVTGSGLEGDHLSDTSTTSLELDSRRH  <b>TRTRPLEQKLISEEDLAANDILDYKDDDDKV</b>
Tag:	C-Myc/DDK
Predicted MW:	16 kDa
Concentration:	>0.05 µg/µL as determined by microplate BCA method
Purity:	> 80% as determined by SDS-PAGE and Coomassie blue staining
Buffer:	25 mM Tris-HCl, 100 mM glycine, pH 7.3, 10% glycerol
Preparation:	Recombinant protein was captured through anti-DDK affinity column followed by conventional chromatography steps.
Note:	For testing in cell culture applications, please filter before use. Note that you may experience some loss of protein during the filtration process.
Storage:	Store at -80°C.
Stability:	Stable for 12 months from the date of receipt of the product under proper storage and handling conditions. Avoid repeated freeze-thaw cycles.
RefSeq:	<a href="#">NP_945317</a>
Locus ID:	5744
UniProt ID:	<a href="#">P12272</a> , <a href="#">A0A024RB29</a>



[View online »](#)

RefSeq Size: 1312

Cytogenetics: 12p11.22

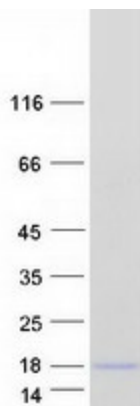
RefSeq ORF: 531

Synonyms: BDE2; HHM; PLP; PTHR; PTHRP

**Summary:** The protein encoded by this gene is a member of the parathyroid hormone family. This hormone, via its receptor, PTHR1, regulates endochondral bone development and epithelial-mesenchymal interactions during the formation of the mammary glands and teeth. It is responsible for most cases of humoral hypercalcemia of malignancy, and mutations in this gene are associated with brachydactyly type E2 (BDE2). Alternatively spliced transcript variants have been found for this gene. There is also evidence for alternative translation initiation from non-AUG (CUG and GUG) start sites, downstream of the initiator AUG codon, resulting in nuclear forms of this hormone. [provided by RefSeq, Nov 2013]

**Protein Families:** Druggable Genome, Secreted Protein

### Product images:



Coomassie blue staining of purified PTH LH protein (Cat# [TP312744]). The protein was produced from HEK293T cells transfected with PTH LH cDNA clone (Cat# [RC212744]) using MegaTran 2.0 (Cat# [TT210002]).