

Product datasheet for **TP312742M**

CORIN (NM_006587) Human Recombinant Protein

Product data:

Product Type:	Recombinant Proteins
Description:	Recombinant protein of human corin, serine peptidase (CORIN), 100 µg
Species:	Human
Expression Host:	HEK293T
Expression cDNA	>RC212742 representing NM_006587
Clone or AA Sequence:	Red=Cloning site Green=Tags(s)

MKQSPALAPEERCRRAGSPKPVLRADDNMMGNGCSQKLATANLLRFLLLVLPICALVLLLIVILLSYVG
TLQKVYFKSNGSEPLVTDGEIQGSDVILTNTIYNQSTVWSTAHPDQHVPAAWTTDASLPGDQSHRNTSACM
NITHSQCQMLPYHATLTPLLSVVRNMEMEKFLKFFTYLHRLSCYQHIMLFGCTLAPECIIDGDDSHGLL
PCRSFCEAAKEGCESVLGMVNYSWPDFLRCSQFRNQTSSNVSRIKFSPPQENGKQLLCGRGENFLCASG
ICIPGKLQCNGYNDCCDDWSDEAHCNSENLFHCHTGKCLNYSLVCDGYDDCGDLSDEQNCDCNPTTEHRC
GDGRCIAMEWCDGDHDCVDKSDDEVNCSCHSQGLVECRNGQCIPSTFQCDGDEDCKDGSDEENC SVIQTS
CQEGDQRCLYNPCLDSCGGSSLCDPNNLSLNNCSQCEPITLLECMNLPYNSTSYPNYFGHRTQKEASISWE
SSLFPALVQTNKYKLMFFSCTILVPKCDVNTGEHIPPCRALCEHSKERCESVLGIVGLQWPEDTDCSQF
PEENSDNQTCMPDEYVEECSPSHFKCRSGQCVLASRRCDGQADCCDDSDSEENC GCKERDLWECPSNKQC
LKHTVICDGFDPDYMDEKNC SFCQDDELECANHACVSRDLWCDGEADCS DSSDEWDCVTL SINVNSS
FLMVHRAATEHHVCADGWQEILSQLACKQMGLGEPVTKLIQEKEPRWLTLSHNWESLNGTTLHELLV
NGQSCESRSKISLLCTKQDCGRRPAARMNKRI LGGRTSRPGRWPWQCSLQSEPSGHICGCVLIAKKWVLT
VAHCFEGRENAAVWKVVLGINNLDHPSVFMQTRFVKTIILHPRYSRAVVDYDISIVELSEDISETG YVRP
VCLPNPEQWLEPDTYCYITGWGHMGNKMPFKLQEGEVRIISLEHCQSYFDMKTITTRMICAGYESGTVDS
CMGDSGGPLVCEKPGGRWTLFGLTSWGSVCF SKVLGPGVYSNVSYFVEWIKRQIYIQTFLLN

TRTRPLEQKLISEEDLAANDILDYKDDDDKV

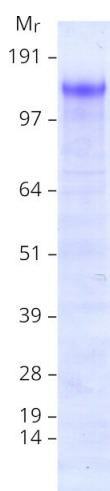
Tag:	C-Myc/DDK
Predicted MW:	116.3 kDa
Concentration:	>0.05 µg/µL as determined by microplate BCA method
Purity:	> 80% as determined by SDS-PAGE and Coomassie blue staining
Buffer:	25 mM Tris-HCl, 100 mM glycine, pH 7.3, 10% glycerol
Bioactivity:	Enzyme activity (PMID: 27086096)



[View online »](#)

Preparation:	Recombinant protein was captured through anti-DDK affinity column followed by conventional chromatography steps.
Note:	For testing in cell culture applications, please filter before use. Note that you may experience some loss of protein during the filtration process.
Storage:	Store at -80°C.
Stability:	Stable for 12 months from the date of receipt of the product under proper storage and handling conditions. Avoid repeated freeze-thaw cycles.
RefSeq:	<u>NP_006578</u>
Locus ID:	10699
UniProt ID:	<u>Q9Y5Q5</u> , <u>B4E2W9</u>
RefSeq Size:	4942
Cytogenetics:	4p12
RefSeq ORF:	3126
Synonyms:	ATC2; CRN; Lrp4; PEE5; TMPRSS10
Summary:	This gene encodes a member of the type II transmembrane serine protease class of the trypsin superfamily. Members of this family are composed of multiple structurally distinct domains. The encoded protein converts pro-atrial natriuretic peptide to biologically active atrial natriuretic peptide, a cardiac hormone that regulates blood volume and pressure. This protein may also function as a pro-brain-type natriuretic peptide convertase. Multiple alternatively spliced transcript variants encoding different isoforms have been found for this gene. [provided by RefSeq, Jun 2013]
Protein Families:	Druggable Genome, Protease, Transmembrane

Product images:



Coomassie blue staining of purified CORIN protein (Cat# [TP312742]). The protein was produced from HEK293T cells transfected with CORIN cDNA clone (Cat# [RC212742]) using MegaTran 2.0 (Cat# [TT210002]).