

Product datasheet for **TP312733**

Nebulette (NEBL) (NM_213569) Human Recombinant Protein

Product data:

Product Type:	Recombinant Proteins
Description:	Recombinant protein of human nebullette (NEBL), transcript variant 2, 20 µg
Species:	Human
Expression Host:	HEK293T
Expression cDNA Clone or AA Sequence:	>RC212733 representing NM_213569 Red =Cloning site Green =Tags(s) MNPQCARCGKVVPTEKVNCLDKYW H K G C F H C E V C K M A L N M N N Y K G Y E K K P Y C N A H Y P K Q S F T T V A D T P E N L R L K Q Q S E L Q S Q V K Y K R D F E E S K G R G F S I V T D T P E L Q R L K R T Q E Q I S N V K Y H E D F E K T K G R G F T P W D D P V T E R V R K N T Q V V S D A A Y K G V H P H I V E M D R R P G I I V A P V L P G A Y Q Q S H S Q G Y G Y M H Q T S V S S M R S M Q H S P N L R T Y R A M Y D Y S A Q D E D E V S F R D G D Y I V N V Q P I D D G W M Y G T V Q R T G R T G M L P A N Y I E F V N TRTRPLEQKLISEEDLAANDILDYKDDDDKV
Tag:	C-Myc/DDK
Predicted MW:	31 kDa
Concentration:	>0.05 µg/µL as determined by microplate BCA method
Purity:	> 80% as determined by SDS-PAGE and Coomassie blue staining
Buffer:	25 mM Tris-HCl, 100 mM glycine, pH 7.3, 10% glycerol
Preparation:	Recombinant protein was captured through anti-DDK affinity column followed by conventional chromatography steps.
Note:	For testing in cell culture applications, please filter before use. Note that you may experience some loss of protein during the filtration process.
Storage:	Store at -80°C.
Stability:	Stable for 12 months from the date of receipt of the product under proper storage and handling conditions. Avoid repeated freeze-thaw cycles.
RefSeq:	NP_998734
Locus ID:	10529
UniProt ID:	O76041 , Q59FZ8



[View online >](#)

RefSeq Size: 1245

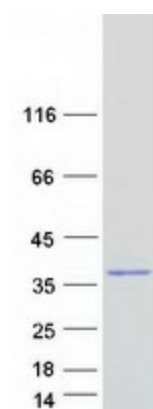
Cytogenetics: 10p12.31

RefSeq ORF: 810

Synonyms: bA165O3.1; C10orf113; LASP2; LNEBL

Summary: This gene encodes a nebulin like protein that is abundantly expressed in cardiac muscle. The encoded protein binds actin and interacts with thin filaments and Z-line associated proteins in striated muscle. This protein may be involved in cardiac myofibril assembly. A shorter isoform of this protein termed LIM nebullette is expressed in non-muscle cells and may function as a component of focal adhesion complexes. Alternate splicing results in multiple transcript variants. [provided by RefSeq, Mar 2010]

Product images:



Coomassie blue staining of purified NEBL protein (Cat# TP312733). The protein was produced from HEK293T cells transfected with NEBL cDNA clone (Cat# [RC212733]) using MegaTran 2.0 (Cat# [TT210002]).