

## Product datasheet for TP312716L

### CR16 (WIPF3) (NM\_001080529) Human Recombinant Protein

#### Product data:

Product Type:	Recombinant Proteins
Description:	Recombinant protein of human WAS/WASL interacting protein family, member 3 (WIPF3), 1 mg
Species:	Human
Expression Host:	HEK293T
Expression cDNA Clone or AA Sequence:	>RC212716 representing NM_001080529 Red=Cloning site Green=Tags(s)

MPVPPPPPPPLPPPPPLGAPPPPPSAPPVSTDTSSLRRADPKGRSALLADIQQGTRLRKVTQINDRSA  
PQIESSKGTNKEGGGSANTRGASTPPTLGDLFAGGFVLRPAGQRDVAGGKTGQGPGRAPSPRLPNKTI  
SGPLIPPASPRLGNTSEAHGAARTAPPRPNVPAPPPPTPPPPPPPLPPPLSSSPIKTPLVSPGPLTKG  
NLPVWAPPVPCAPPPPPPPPTPPPLPPASVLSKAVKQQLAPLHLPPIPPLPLPPCGYPGLKAEPA  
SPAQDAQEPPAPPPPLPPYASCSPRASLPAPPLPGVNSSSETPPPLPPKSPSFQAPPQKAGAQAAPP  
PPGSQPFLQKKRHGRPGAGGGKLNPPAPPARSPTTELSSKSQQATAWTPTQQPGGQLRNGSLHIIDDFE  
SKFTFHSVEDFPPPDYKPCQKIYPSKIPRSRTPGPWLQAEAVGQSSDDIKGRNSQVTQASCL

TRTRPLEQKLISEEDLAANDILDYKDDDDKV

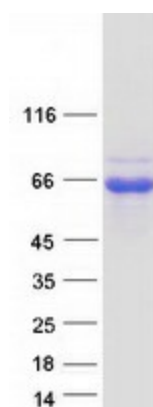
Tag:	C-Myc/DDK
Predicted MW:	49.2 kDa
Concentration:	>0.05 µg/µL as determined by microplate BCA method
Purity:	> 80% as determined by SDS-PAGE and Coomassie blue staining
Buffer:	25 mM Tris-HCl, 100 mM glycine, pH 7.3, 10% glycerol
Preparation:	Recombinant protein was captured through anti-DDK affinity column followed by conventional chromatography steps.
Note:	For testing in cell culture applications, please filter before use. Note that you may experience some loss of protein during the filtration process.
Storage:	Store at -80°C.
Stability:	Stable for 12 months from the date of receipt of the product under proper storage and handling conditions. Avoid repeated freeze-thaw cycles.
RefSeq:	<a href="#">NP_001073998</a>



[View online »](#)

Locus ID:	644150
UniProt ID:	<a href="#">A6NGB9</a>
RefSeq Size:	3241
Cytogenetics:	7p14.3
RefSeq ORF:	1449
Synonyms:	CR16
Summary:	May be a regulator of cytoskeletal organization. May have a role in spermatogenesis (By similarity).[UniProtKB/Swiss-Prot Function]

### Product images:



Coomassie blue staining of purified WIPF3 protein (Cat# [TP312716]). The protein was produced from HEK293T cells transfected with WIPF3 cDNA clone (Cat# [RC212716]) using MegaTran 2.0 (Cat# [TT210002]).