

Product datasheet for TP312716

CR16 (WIPF3) (NM_001080529) Human Recombinant Protein

Product data:

Product Type:	Recombinant Proteins
Description:	Recombinant protein of human WAS/WASL interacting protein family, member 3 (WIPF3), 20 µg
Species:	Human
Expression Host:	HEK293T
Expression cDNA Clone or AA Sequence:	>RC212716 representing NM_001080529 Red =Cloning site Green =Tags(s)
	<p>MPVPPPPPPPLPPPPPLGAPPPPPSAPPVSTDTSSLRRADPKGRSALLADIQQGTRLRKVTQINDRSA PQIESSKGTNKEGGGSANTRGASTPPTLGDLFAGGFVLRPAGQRDVAGGKTGQGPGRAPSPRLPNKTI SGPLIPPASPRLGNTSEAHGAARTAPPRPNVPAPPPPTPPPPPPPLPPPLSSSPIKTPLVSPGPLTKG NLPVWAPPVPCAPPPPPPPPTPPPLPPASVLSDKAVKQPQLAPLHLPPIPPPLLLPPCGYPGLKAEPA SPAQDAQEPPAPPPLPPYASCSPRASLPAPPLPGVNSSSETPPPLPPKSPSFQAPPQKAGAQAQPAPPA PPGSQPFLQKKRHGRPGAGGGKLNPPAPPARSPTTELSSKSQQATAWTPTQQPGGQLRNGSLHIIDDFE SKFTFHSVEDFPPPDYKPCQKIYPSKIPRSRTPGPWLQAEAVGQSSDDIKGRNSQVTQASCL</p> <p>TRTRPLEQKLISEEDLAANDILDYKDDDDKV</p>
Tag:	C-Myc/DDK
Predicted MW:	49.2 kDa
Concentration:	>0.05 µg/µL as determined by microplate BCA method
Purity:	> 80% as determined by SDS-PAGE and Coomassie blue staining
Buffer:	25 mM Tris-HCl, 100 mM glycine, pH 7.3, 10% glycerol
Preparation:	Recombinant protein was captured through anti-DDK affinity column followed by conventional chromatography steps.
Note:	For testing in cell culture applications, please filter before use. Note that you may experience some loss of protein during the filtration process.
Storage:	Store at -80°C.
Stability:	Stable for 12 months from the date of receipt of the product under proper storage and handling conditions. Avoid repeated freeze-thaw cycles.



[View online »](#)

RefSeq: [NP_001073998](#)

Locus ID: 644150

UniProt ID: [A6NGB9](#)

RefSeq Size: 3241

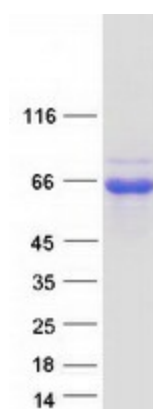
Cytogenetics: 7p14.3

RefSeq ORF: 1449

Synonyms: CR16

Summary: May be a regulator of cytoskeletal organization. May have a role in spermatogenesis (By similarity).[UniProtKB/Swiss-Prot Function]

Product images:



Coomassie blue staining of purified WIPF3 protein (Cat# TP312716). The protein was produced from HEK293T cells transfected with WIPF3 cDNA clone (Cat# [RC212716]) using MegaTran 2.0 (Cat# [TT210002]).