

## Product datasheet for **TP312680L**

### **FAM92A1 (FAM92A) (NM\_145269) Human Recombinant Protein**

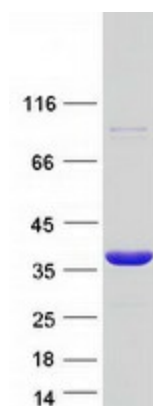
#### Product data:

Product Type:	Recombinant Proteins
Description:	Recombinant protein of human family with sequence similarity 92, member A1 (FAM92A1), 1 mg
Species:	Human
Expression Host:	HEK293T
Expression cDNA Clone or AA Sequence:	>RC212680 representing NM_145269 <b>Red</b> =Cloning site <b>Green</b> =Tags(s)  MMRRRTLENRNAQTKQLQTAVSNVEKHFGELCQIFAAYVRKTARLRDKADLLVNEINAYAATETPHLKLGL MNFADEFQKLQDYRQAEVERLEAKVVEPLKTYGTIVKMKRDDLKATLTARNREKQLTQLERTRQRNPSD RHVISAETELQRAAMDASRTSRHLEETINNFERQKMKDIKTIFSEFITEMLFHGKALEVYTAAYQNIQ NIDEDLEVFRNSLYAPDYSSRLDIVRANSKSPLQRSLSAKCVSGTGQVSTCRLRKDQQAEDDEDELD VTEENFLK  <b>SGPTRTRRLEQKLISEEDLAANDILDYKDDDDKV</b>
Tag:	C-Myc/DDK
Predicted MW:	33.3 kDa
Concentration:	>0.05 µg/µL as determined by microplate BCA method
Purity:	> 80% as determined by SDS-PAGE and Coomassie blue staining
Buffer:	25 mM Tris-HCl, 100 mM glycine, pH 7.3, 10% glycerol
Preparation:	Recombinant protein was captured through anti-DDK affinity column followed by conventional chromatography steps.
Note:	For testing in cell culture applications, please filter before use. Note that you may experience some loss of protein during the filtration process.
Storage:	Store at -80°C.
Stability:	Stable for 12 months from the date of receipt of the product under proper storage and handling conditions. Avoid repeated freeze-thaw cycles.
RefSeq:	<u><a href="#">NP_660312</a></u>
Locus ID:	137392


[View online »](#)

UniProt ID:	<u>A1XBS5</u>
RefSeq Size:	1135
Cytogenetics:	8q22.1
RefSeq ORF:	867
Synonyms:	FAM92A; FAM92A1; PAPA9
Summary:	Probable regulator of ciliogenesis involved in limb morphogenesis. In cooperation with CBY1 it is involved in the recruitment and fusion of endosomal vesicles at distal appendages during early stages of ciliogenesis.[UniProtKB/Swiss-Prot Function]

### Product images:



Coomassie blue staining of purified FAM92A protein (Cat# [TP312680]). The protein was produced from HEK293T cells transfected with FAM92A cDNA clone (Cat# [RC212680]) using MegaTran 2.0 (Cat# [TT210002]).