

Product datasheet for TP312627

POF1B (NM_024921) Human Recombinant Protein

Product data:

Product Type: Recombinant Proteins
Description: Recombinant protein of human premature ovarian failure, 1B (POF1B), 20 µg
Species: Human
Expression Host: HEK293T
Expression cDNA Clone or AA Sequence: >RC212627 representing NM_024921
Red=Cloning site **Green**=Tags(s)

MSSSYWSETSSSSCGTQQLPEVLQCQPQHYHCYHQSSQAQQPPEKNWYERVRTYSGPMNKVVQALDPFN
SREVLSPDKTSSYQNLVWSDHSQELHSPTLKISTCAPSTLHITQNTQELHSPVTKLTYPQTTIRKYV
VQNPEQEPLSQFLRGSHFFPGNNVIYEKTIKVEKLNLDQGCHPQAQCHHHIIQQPQVIHSAHWQQPDSS
QQIQAITGNNPISTHIGNELCHSGSSQICEQVIIQDDGPEKLDPRYFGELLADLSRKNLTDLYHCLLEHLQ
RIGGSKQDFESTDESEDIESLIPKGLSEFTKQQIRYILQMRGMSDKSLRLVLFSTFSNIREELGHLQNDLT
SLENDKMRLEKDLSEKDTQLKEYEELLASVRANNHQQQOGLQDSSSKCQALEENNLRLRHTLSDMEYRLK
ELEYCKRNLEQENQNLRMQVSETCTGPMLQAKMDEIGNHYTEMVKNLRMEKDREICRLRSQNLNQHVKDVS
KREGSCSDFQFKLHELTSLLEEKDSLIRQSEELSKLRQEIYSSHNQPSGGRTTITTKKYRTQYPILGL
LYDDYEYIPPGSETQTIVIEKTEDKYTCP

TRTRPLEQKLISEEDLAANDILDYKDDDDKV

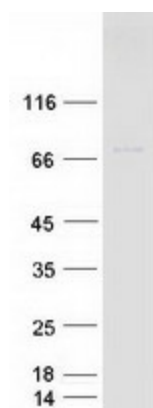
Tag: C-Myc/DDK
Predicted MW: 67.9 kDa
Concentration: >0.05 µg/µL as determined by microplate BCA method
Purity: > 80% as determined by SDS-PAGE and Coomassie blue staining
Buffer: 25 mM Tris-HCl, 100 mM glycine, pH 7.3, 10% glycerol
Preparation: Recombinant protein was captured through anti-DDK affinity column followed by conventional chromatography steps.
Note: For testing in cell culture applications, please filter before use. Note that you may experience some loss of protein during the filtration process.
Storage: Store at -80°C.



[View online »](#)

Stability:	Stable for 12 months from the date of receipt of the product under proper storage and handling conditions. Avoid repeated freeze-thaw cycles.
RefSeq:	NP_079197
Locus ID:	79983
UniProt ID:	Q8WVV4
RefSeq Size:	3942
Cytogenetics:	Xq21.1
RefSeq ORF:	1767
Synonyms:	POF; POF2B
Summary:	<p>Premature ovarian failure (POF) is characterized by primary or secondary amenorrhea in women less than 40 years old. Two POF susceptibility regions called "POF1" and "POF2" have been identified by breakpoint mapping of X-autosome translocations. POF1 extends from Xq21-qter while POF2 extends from Xq13.3 to Xq21.1. This gene, POF1B, resides in the POF2 region. This gene is expressed at trace levels in mouse prenatal ovary and is barely detectable or absent from adult ovary, in human and in the mouse respectively. This gene's expression is restricted to epithelia with its highest expression in the epidermis, and oro-pharyngeal and gastro-intestinal tracts. The protein encoded by this gene binds non-muscle actin filaments. The role this gene may play in the etiology of premature ovarian failure remains to be determined. [provided by RefSeq, Jan 2010]</p>

Product images:



Coomassie blue staining of purified POF1B protein (Cat# TP312627). The protein was produced from HEK293T cells transfected with POF1B cDNA clone (Cat# [RC212627]) using MegaTran 2.0 (Cat# [TT210002]).