

## Product datasheet for **TP312621M**

### **KLHL14 (NM\_020805) Human Recombinant Protein**

#### **Product data:**

**Product Type:** Recombinant Proteins  
**Description:** Recombinant protein of human kelch-like 14 (Drosophila) (KLHL14), 100 µg  
**Species:** Human  
**Expression Host:** HEK293T  
**Expression cDNA** >RC212621 representing NM\_020805  
**Clone or AA Sequence:** **Red**=Cloning site **Green**=Tags(s)

MSRSGDRTSTFDPSHSDNLLHGLNLLWRKQLFCDVTLTAQGQQFHCHKAVLASCSQYFRSLFSSHPPLGG  
GVGGQDGLGAPKDQQPPQQPSQQQPPQEEPGTPSSSPDDKLLTSPRAINNLVLQGCSSIGLRLVLE  
YLTYANVTLSLDTVEEVLSVKILHIPQVTKLCVQFLNDQISVQNYKQVCKIAALHGLEETKKLANKYLV  
EDVLLNFEEMRALLDSLPPPVESELALFQMSVLWLEHDRETRM QYAPDLMKRLRFALIPAPELVERVQS  
VDFMRTDPVCQKLLLDAMNYHLMFPRQHCRQSLASRIRSNKKMMLLVGGLPPGPDRLPSNLVQYYDDEKK  
TWKILTIMPYN SAHHCVEVENFLFVLGGEDQWNPNGKHSTNFVSRYPFRNSWIQLPPMQERRASFYAC  
RLDKHLYVIGGRNETGYLSSVECYNLETNEWRYVSSLPQPLAAHAGAVHNGKIYISGGVHNGEYVPWLVC  
YDPVMDVWARKQDMNTKRAIHTLAVMNDRLYAIGGNHLKGFSLDVMLVECYDPKGDQWNILQTPILEGR  
SGPGCAVLDDSIYLVGGYSWSMGAYKSSTICYCEKGTWTELEGDVAEPLAGPACVTVILPSCVPYNK

**TRTRPLEQKLISEEDLAANDILDYKDDDDKV**

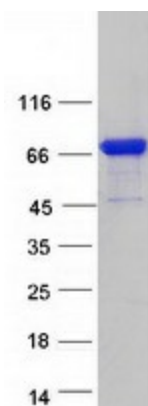
**Tag:** C-Myc/DDK  
**Predicted MW:** 70.5 kDa  
**Concentration:** >0.05 µg/µL as determined by microplate BCA method  
**Purity:** > 80% as determined by SDS-PAGE and Coomassie blue staining  
**Buffer:** 25 mM Tris-HCl, 100 mM glycine, pH 7.3, 10% glycerol  
**Preparation:** Recombinant protein was captured through anti-DDK affinity column followed by conventional chromatography steps.  
**Note:** For testing in cell culture applications, please filter before use. Note that you may experience some loss of protein during the filtration process.  
**Storage:** Store at -80°C.



[View online »](#)

<b>Stability:</b>	Stable for 12 months from the date of receipt of the product under proper storage and handling conditions. Avoid repeated freeze-thaw cycles.
<b>RefSeq:</b>	<a href="#">NP_065856</a>
<b>Locus ID:</b>	57565
<b>UniProt ID:</b>	<a href="#">Q9P2G3</a>
<b>RefSeq Size:</b>	4261
<b>Cytogenetics:</b>	18q12.1
<b>RefSeq ORF:</b>	1884
<b>Summary:</b>	The protein encoded by this gene is a member of the Kelch-like gene family, whose members contain a BTB/POZ domain, a BACK domain, and several Kelch domains. The encoded protein possesses six Kelch domains and localizes to the endoplasmic reticulum, where it interacts with torsin-1A. [provided by RefSeq, Sep 2015]

### Product images:



Coomassie blue staining of purified KLHL14 protein (Cat# [TP312621]). The protein was produced from HEK293T cells transfected with KLHL14 cDNA clone (Cat# [RC212621]) using MegaTran 2.0 (Cat# [TT210002]).