

## Product datasheet for TP312621

### KLHL14 (NM\_020805) Human Recombinant Protein

#### Product data:

Product Type:	Recombinant Proteins
Description:	Recombinant protein of human kelch-like 14 (Drosophila) (KLHL14), 20 µg
Species:	Human
Expression Host:	HEK293T
Expression cDNA	>RC212621 representing NM_020805
Clone or AA Sequence:	Red=Cloning site Green=Tags(s)

MSRSGDRTSTFDPSHSDNLLHGLNLLWRKQLFCDVTLTAQGGQFHCCHKAVLASCSQYFRSLFSSHPPLGG  
GVGGQDGLGAPKDQQPPQQPSQQQPPQEEPGTPSSSPDDKLLTSPRAINNLVLQGCSSIGLRLVLE  
YLYTANVTLSLDTVEEVLSVKILHIPQVTKLCVQFLNDQISVQNYKQVCKIAALHGLEETKKLANKYLV  
EDVLLNFEEMRALLDSLPPPVESELALFQMSVLWLEHDRETRM QYAPDLMKRLRFALIPAPELVERVQS  
VDFMRTDPVCQKLLLDAMNYHLMFQRQHCRQSLASRIRSNKKMMLLVGGLPPGPDRLPSNLVQYYDDEKK  
TWKILTIMPYNSAHHCVVEVENFLFVLGGEDQWNPNGKHSTNFVSRYPFRNSWIQLPPMQERRASFYAC  
RLDKHLYVIGGRNETGYLSSVECYNLETNEWRYVSSLPQPLAAHAGAVHNGKIYISGGVHNGEYVPWLVC  
YDPVMDVWARKQDMNTKRAIHTLAVMNDRLYAIGGNHLKGFSLDVMLVECYDPKGDQWNILQTPILEGR  
SGPGCAVLDDSIYLVGGYSWSMGAYKSSTICYCEKGTWTELEGDVAEPLAGPACVTVILPSCVPYNK

TRTRPLEQKLISEEDLAANDILDYKDDDDKV

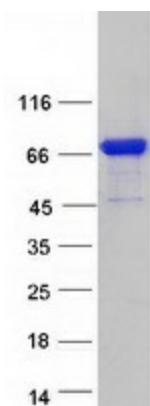
Tag:	C-Myc/DDK
Predicted MW:	70.5 kDa
Concentration:	>0.05 µg/µL as determined by microplate BCA method
Purity:	> 80% as determined by SDS-PAGE and Coomassie blue staining
Buffer:	25 mM Tris-HCl, 100 mM glycine, pH 7.3, 10% glycerol
Preparation:	Recombinant protein was captured through anti-DDK affinity column followed by conventional chromatography steps.
Note:	For testing in cell culture applications, please filter before use. Note that you may experience some loss of protein during the filtration process.
Storage:	Store at -80°C.



[View online »](#)

<b>Stability:</b>	Stable for 12 months from the date of receipt of the product under proper storage and handling conditions. Avoid repeated freeze-thaw cycles.
<b>RefSeq:</b>	<a href="#">NP_065856</a>
<b>Locus ID:</b>	57565
<b>UniProt ID:</b>	<a href="#">Q9P2G3</a>
<b>RefSeq Size:</b>	4261
<b>Cytogenetics:</b>	18q12.1
<b>RefSeq ORF:</b>	1884
<b>Summary:</b>	The protein encoded by this gene is a member of the Kelch-like gene family, whose members contain a BTB/POZ domain, a BACK domain, and several Kelch domains. The encoded protein possesses six Kelch domains and localizes to the endoplasmic reticulum, where it interacts with torsin-1A. [provided by RefSeq, Sep 2015]

### Product images:



Coomassie blue staining of purified KLHL14 protein (Cat# TP312621). The protein was produced from HEK293T cells transfected with KLHL14 cDNA clone (Cat# [RC212621]) using MegaTran 2.0 (Cat# [TT210002]).