

## Product datasheet for **TP312607L**

### **MST4 (STK26) (NM\_016542) Human Recombinant Protein**

#### **Product data:**

**Product Type:** Recombinant Proteins  
**Description:** Recombinant protein of human serine/threonine protein kinase MST4 (MST4), transcript variant 1, 1 mg

**Species:** Human

**Expression Host:** HEK293T

**Expression cDNA Clone or AA Sequence:** >RC212607 protein sequence  
**Red**=Cloning site **Green**=Tags(s)

MAHSPVAVQVPGMQNNIADPEELFTKLERIGKGSFGVEVFKGIDNRTQQVVAIKIIDLEEADEIEDIQQE  
ITVLSQCDSSYVTKYYGSYLKGSKLWIIMEYLGGSALDLLRAGPFDEFQIATMLKEILKGLDYLHSEKK  
IHRDIKAANVLLSEQGDVKLADFGVAGQLTDTQIKRNTFVGTPFWMAPEVIQQSAYDSKADIWSLGITAI  
ELAKGEPPNSDMHPMRVLFIPKNNPPTLVGDFTESFKEFIDACLNKDPSPRPTAKELLKHKFIVKNSKK  
TSYLTELIDRFKRWKAEGHSDDESSEGSSESTSRENNTHPAWSFTTVRKKPDPKKVQNGAEQDLVQTL  
SCLSMIITPAFAELKQQDENNASRNQAIEELEKSIAVAEAAACPGITDKMVKKLIEKFQKCSADESP

**TRTRPLEQKLISEEDLAANDILDYKDDDDKV**

**Tag:** C-Myc/DDK

**Predicted MW:** 46.3 kDa

**Concentration:** >0.05 µg/µL as determined by microplate BCA method

**Purity:** > 80% as determined by SDS-PAGE and Coomassie blue staining

**Buffer:** 25 mM Tris-HCl, 100 mM glycine, pH 7.3, 10% glycerol

**Preparation:** Recombinant protein was captured through anti-DDK affinity column followed by conventional chromatography steps.

**Note:** For testing in cell culture applications, please filter before use. Note that you may experience some loss of protein during the filtration process.

**Storage:** Store at -80°C.

**Stability:** Stable for 12 months from the date of receipt of the product under proper storage and handling conditions. Avoid repeated freeze-thaw cycles.

**RefSeq:** [NP\\_057626](#)



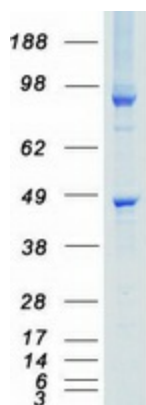
[View online >](#)

Locus ID: 51765  
UniProt ID: [Q9P289](#)  
RefSeq Size: 3352  
Cytogenetics: Xq26.2  
RefSeq ORF: 1248  
Synonyms: MASK; MST4

**Summary:** The product of this gene is a member of the GCK group III family of kinases, which are a subset of the Ste20-like kinases. The encoded protein contains an amino-terminal kinase domain, and a carboxy-terminal regulatory domain that mediates homodimerization. The protein kinase localizes to the Golgi apparatus and is specifically activated by binding to the Golgi matrix protein GM130. It is also cleaved by caspase-3 in vitro, and may function in the apoptotic pathway. Several alternatively spliced transcript variants of this gene have been described, but the full-length nature of some of these variants has not been determined. [provided by RefSeq, Jul 2008]

**Protein Families:** Druggable Genome, Protein Kinase

### Product images:



Coomassie blue staining of purified STK26 protein (Cat# [TP312607]). The protein was produced from HEK293T cells transfected with STK26 cDNA clone (Cat# [RC212607]) using MegaTran 2.0 (Cat# [TT210002]).