

Product datasheet for **TP312606**

MNX1 (NM_005515) Human Recombinant Protein

Product data:

Product Type:	Recombinant Proteins
Description:	Recombinant protein of human motor neuron and pancreas homeobox 1 (MNX1), 20 µg
Species:	Human
Expression Host:	HEK293T
Expression cDNA Clone or AA Sequence:	>RC212606 representing NM_005515 Red =Cloning site Green =Tags(s)
	MEKSKNFRIDALLAVDPPRAASAQSAPLALVTSLAAAASGTGGGGGGGGASGGTSGSCSPASSEPPAAPA DRLRAESPSPRLLAAHCALLPKPGFLGAGGGGGGTGGGHGGPHHHAHPGAAAAAAAAAAAAAAAAAGGLALG LHPGGAQGGAGLPAQAALYGHPVYGYSAAAAAALAGQHPALSYSYPVQGAHPAHPADPIKLGAGTFQL DQWLRASTAGMILPKMPDFNSQAQSNLLGKRRRPTAFTSQQLLELHQFKLNKYLSPKRFEVATSLML TETQVKIWFQNRMRKWKRSKKAKEQAAQEAQKGGGGGAGKGGAEPEGAEELLGPPAPGDKGSGRRLRD LRDSDPEEDEDDEDHFPYSNGASVHAASSDCSSEDDSPPPRPSHQAPAQ
	TRTRPLEQKLISEEDLAANDILDYKDDDDKV
Tag:	C-Myc/DDK
Predicted MW:	40.4 kDa
Concentration:	>0.05 µg/µL as determined by microplate BCA method
Purity:	> 80% as determined by SDS-PAGE and Coomassie blue staining
Buffer:	25 mM Tris-HCl, 100 mM glycine, pH 7.3, 10% glycerol
Preparation:	Recombinant protein was captured through anti-DDK affinity column followed by conventional chromatography steps.
Note:	For testing in cell culture applications, please filter before use. Note that you may experience some loss of protein during the filtration process.
Storage:	Store at -80°C.
Stability:	Stable for 12 months from the date of receipt of the product under proper storage and handling conditions. Avoid repeated freeze-thaw cycles.
RefSeq:	<u>NP_005506</u>
Locus ID:	3110



[View online »](#)

UniProt ID: [P50219](#)

RefSeq Size: 2176

Cytogenetics: 7q36.3

RefSeq ORF: 1203

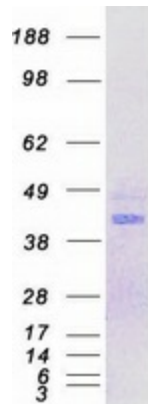
Synonyms: HB9; HLXB9; HOXHB9; SCRA1

Summary: This gene encodes a nuclear protein, which contains a homeobox domain and is a transcription factor. Mutations in this gene result in Currarino syndrome, an autosomic dominant congenital malformation. Alternatively spliced transcript variants encoding different isoforms have been found for this gene. [provided by RefSeq, Sep 2009]

Protein Families: Druggable Genome, ES Cell Differentiation/IPS

Protein Pathways: Maturity onset diabetes of the young

Product images:



Coomassie blue staining of purified MNX1 protein (Cat# TP312606). The protein was produced from HEK293T cells transfected with MNX1 cDNA clone (Cat# [RC212606]) using MegaTran 2.0 (Cat# [TT210002]).