

## Product datasheet for **TP312590L**

### **TMEM231 (NM\_001077418) Human Recombinant Protein**

#### Product data:

Product Type:	Recombinant Proteins
Description:	Recombinant protein of human hypothetical protein FLJ22167 (FLJ22167), transcript variant 2, 1 mg
Species:	Human
Expression Host:	HEK293T
Expression cDNA Clone or AA Sequence:	>RC212590 representing NM_001077418 <b>Red</b> =Cloning site <b>Green</b> =Tags(s)

MALYELFSHPVERSYRAGLCSKAALFLLAAALTYIPPLLVAFRSHGFWLKRSSYEEQPTVRFQHQVLLV  
ALLGPESDGLAWSTFPANRLQGDRLRVPLVSTREEDRNQDGKTDMLHFKLELPLQSTEHLVGVQLILT  
FSYRLHRMATLVMQSM AFLQSSFPVPGS QLYVNGDLRLQKQPLSCGGLDARYNISVINGTSPFAYDYDL  
THIVAAYQERNVTTVLNDPNPIWLVGRAADAPFVINAIIRYPVEVISYQPGFWEVMVKFAVWQYVSILLIF  
LWVFERIKIFVFQNQVTTIPVTVTPRGDLCKEHL

**TRTRPLEQKLISEEDLAANDILDYKDDDDKV**

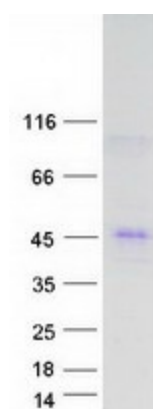
Tag:	C-Myc/DDK
Predicted MW:	35.9 kDa
Concentration:	>0.05 µg/µL as determined by microplate BCA method
Purity:	> 80% as determined by SDS-PAGE and Coomassie blue staining
Buffer:	25 mM Tris-HCl, 100 mM glycine, pH 7.3, 10% glycerol
Preparation:	Recombinant protein was captured through anti-DDK affinity column followed by conventional chromatography steps.
Note:	For testing in cell culture applications, please filter before use. Note that you may experience some loss of protein during the filtration process.
Storage:	Store at -80°C.
Stability:	Stable for 12 months from the date of receipt of the product under proper storage and handling conditions. Avoid repeated freeze-thaw cycles.
RefSeq:	<u><a href="#">NP_001070886</a></u>
Locus ID:	79583



[View online »](#)

UniProt ID:	<a href="#">Q9H6L2</a>
RefSeq Size:	2911
Cytogenetics:	16q23.1
RefSeq ORF:	948
Synonyms:	ALYE870; JBTS20; MKS11; PRO1886
Summary:	This gene encodes a transmembrane protein, which is a component of the B9 complex involved in the formation of the diffusion barrier between the cilia and plasma membrane. Mutations in this gene cause Joubert syndrome (JBTS). Multiple alternatively spliced transcript variants have been found for this gene. [provided by RefSeq, Jan 2013]
Protein Families:	Transmembrane

### Product images:



Coomassie blue staining of purified TMEM231 protein (Cat# [TP312590]). The protein was produced from HEK293T cells transfected with TMEM231 cDNA clone (Cat# [RC212590]) using MegaTran 2.0 (Cat# [TT210002]).