

Product datasheet for **TP312547**

Kallikrein 11 (KLK11) (NM_144947) Human Recombinant Protein

Product data:

| | |
|---------------------------------------|---|
| Product Type: | Recombinant Proteins |
| Description: | Recombinant protein of human kallikrein-related peptidase 11 (KLK11), transcript variant 2, 20 µg |
| Species: | Human |
| Expression Host: | HEK293T |
| Expression cDNA Clone or AA Sequence: | >RC212547 representing NM_144947 Red =Cloning site Green =Tags(s) |
| | <p>MQRLRWLRDWKSSGRGLTAAKEPGARSSPLQAMRILQLILLALATGLVGGETRIIKGFECKPHSQPWQAA LFEKTRLLCGATLIAPRWLLTAAHCLKPRYIVHLGQHNLQKEEGCEQTRTATESFPHPGFNNSLPNKDHR NDIMLVKMASPVSITWAVRPLTLSSRCVTAGTSCISGWGSTSSPQLRLPHTLRCANITIEHQKCENAY PGNITDTMVCASVQEGGKDSCQGDSGGPLVCNQSLQGIISWGQDPCAITRKPGVYTKVCKYVDWIQETMK NN</p> <p>TRTRPLEQKLISEEDLAANDILDYKDDDDKV</p> |
| Tag: | C-Myc/DDK |
| Predicted MW: | 30.9 kDa |
| Concentration: | >0.05 µg/µL as determined by microplate BCA method |
| Purity: | > 80% as determined by SDS-PAGE and Coomassie blue staining |
| Buffer: | 25 mM Tris-HCl, 100 mM glycine, pH 7.3, 10% glycerol |
| Preparation: | Recombinant protein was captured through anti-DDK affinity column followed by conventional chromatography steps. |
| Note: | For testing in cell culture applications, please filter before use. Note that you may experience some loss of protein during the filtration process. |
| Storage: | Store at -80°C. |
| Stability: | Stable for 12 months from the date of receipt of the product under proper storage and handling conditions. Avoid repeated freeze-thaw cycles. |
| RefSeq: | <u>NP_659196</u> |
| Locus ID: | 11012 |



[View online »](#)

UniProt ID: [Q9UBX7](#)

RefSeq Size: 1289

Cytogenetics: 19q13.41

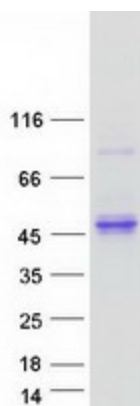
RefSeq ORF: 846

Synonyms: PRSS20; TLSP

Summary: Kallikreins are a subgroup of serine proteases having diverse physiological functions. Growing evidence suggests that many kallikreins are implicated in carcinogenesis and some have potential as novel cancer and other disease biomarkers. This gene is one of the fifteen kallikrein subfamily members located in a cluster on chromosome 19. Alternate splicing and the use of alternate promoters results in multiple transcript variants encoding distinct isoforms which are differentially expressed. [provided by RefSeq, Dec 2016]

Protein Families: Druggable Genome, Protease, Secreted Protein

Product images:



Coomassie blue staining of purified KLK11 protein (Cat# TP312547). The protein was produced from HEK293T cells transfected with KLK11 cDNA clone (Cat# [RC212547]) using MegaTran 2.0 (Cat# [TT210002]).