

## Product datasheet for **TP312537M**

### **SHCBP1L (NM\_030933) Human Recombinant Protein**

#### Product data:

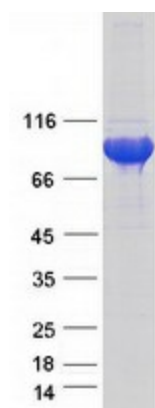
Product Type:	Recombinant Proteins
Description:	Recombinant protein of human chromosome 1 open reading frame 14 (C1orf14), 100 µg
Species:	Human
Expression Host:	HEK293T
Expression cDNA Clone or AA Sequence:	>RC212537 representing NM_030933 <b>Red</b> =Cloning site <b>Green</b> =Tags(s)
	<p>MASGSKASVPADSFRTISPDRRGEKSASAVSGDTAAATTLKGT AIPVRSVASPRPVKGKAGRETARLRL QRLPAAQAEDTGEAAAAAAEEPLLVPPEDEEEAQPLPPVCVSRMRGMWRDEKVS LYCDEVLDCKAEDA D EVMGKYLSEKLKLDKWLGVWKTNP SVFFVKYEEASIPFVGILVEVTCEPYQDSSSRFKVTVSVAEPFSS NIANIPRDLVDEILEELEHSVPLLEVYPVEGQDTDIHVIALALEVVRFFYDFLWRDWDDEESCENYALI EERINLWCDIQDGTIPGPIAQRFKKTL EKYKNKRVELIEYQSNIKEDPSAAEAVECWKKYYEIVMLCGLL KMWEDLRLRVHGPFFPRILRRRK GKREFGKTITHIVAKMMTTEMIKDLSSDTLLQQHGDLDLALDNCYSG DTVIIFPGEYQAANLALLTDDIIKGVGKREEIMITSEPSRDSFV VSKADNVKLMHLSLIQQTVDGIVV VESGHMTLENCILKCEGTGVCVLTGAALTITDSEITGAQGAGVELYPGSIAILERNEIHHCCNNLR TSNSS KSTLGGVNMKVLPA PKLKMTNNHIYSNKG YGVSI LQPMEQFFIVAE EALNKRASSGDKKDDKMLFKVMQ N LNLEMNNNKIEANVKGDIRIVTS</p> <p><b>TRTRPLEQKLISEEDLAANDILDYKDDDDKV</b></p>
Tag:	C-Myc/DDK
Predicted MW:	72.5 kDa
Concentration:	>0.05 µg/µL as determined by microplate BCA method
Purity:	> 80% as determined by SDS-PAGE and Coomassie blue staining
Buffer:	25 mM Tris-HCl, 100 mM glycine, pH 7.3, 10% glycerol
Preparation:	Recombinant protein was captured through anti-DDK affinity column followed by conventional chromatography steps.
Note:	For testing in cell culture applications, please filter before use. Note that you may experience some loss of protein during the filtration process.



[View online »](#)

<b>Storage:</b>	Store at -80°C.
<b>Stability:</b>	Stable for 12 months from the date of receipt of the product under proper storage and handling conditions. Avoid repeated freeze-thaw cycles.
<b>RefSeq:</b>	<a href="#">NP_112195</a>
<b>Locus ID:</b>	81626
<b>UniProt ID:</b>	<a href="#">Q9BZQ2</a>
<b>RefSeq Size:</b>	2363
<b>Cytogenetics:</b>	1q25.3
<b>RefSeq ORF:</b>	1959
<b>Synonyms:</b>	C1orf14; GE36
<b>Summary:</b>	This gene encodes a Src homology 2 domain-binding protein 1-like protein. The encoded protein interacts with heat shock 70 kDa protein 2 and may be involved in maintaining spindle integrity during meiosis. This gene is located in region of chromosome 1 encompassing a prostate cancer susceptibility locus. [provided by RefSeq, Sep 2016]

### Product images:



Coomassie blue staining of purified SHCBP1L protein (Cat# [TP312537]). The protein was produced from HEK293T cells transfected with SHCBP1L cDNA clone (Cat# [RC212537]) using MegaTran 2.0 (Cat# [TT210002]).