

## Product datasheet for **TP312527M**

### IGF1 (NM\_000618) Human Recombinant Protein

#### Product data:

Product Type:	Recombinant Proteins
Description:	Recombinant protein of human insulin-like growth factor 1 (somatomedin C) (IGF1), transcript variant 4, 100 µg
Species:	Human
Expression Host:	HEK293T
Expression cDNA Clone or AA Sequence:	>RC212527 representing NM_000618 <b>Red</b> =Cloning site <b>Green</b> =Tags(s)
	 MGKISSLPTQLFKCCFCDFLKVKMHTMSSSHLFYLALCLLTFTSSATAGPETLCGAELVDALQFVCGDRG FYFNKPTGYGSSRRAPQTGIVDECCFRSCDLRRLEMYCAPLKPAKSARSVRAQRHTDMPKTQKEVHLKN ASRGSAGNKNYRM  <b>TRTRPLEQKLISEEDLAANDILDYKDDDDKV</b>
Tag:	C-Myc/DDK
Predicted MW:	11.6 kDa
Concentration:	>0.05 µg/µL as determined by microplate BCA method
Purity:	> 80% as determined by SDS-PAGE and Coomassie blue staining
Buffer:	25 mM Tris-HCl, 100 mM glycine, pH 7.3, 10% glycerol
Preparation:	Recombinant protein was captured through anti-DDK affinity column followed by conventional chromatography steps.
Note:	For testing in cell culture applications, please filter before use. Note that you may experience some loss of protein during the filtration process.
Storage:	Store at -80°C.
Stability:	Stable for 12 months from the date of receipt of the product under proper storage and handling conditions. Avoid repeated freeze-thaw cycles.
RefSeq:	<a href="#">NP_000609</a>
Locus ID:	3479
UniProt ID:	<a href="#">P05019</a> , <a href="#">Q5U743</a> , <a href="#">Q59GC5</a>



[View online »](#)

RefSeq Size: 7260

Cytogenetics: 12q23.2

RefSeq ORF: 459

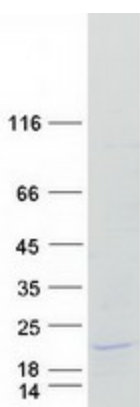
Synonyms: IGF; IGF-I; IGFI; MGF

**Summary:** The protein encoded by this gene is similar to insulin in function and structure and is a member of a family of proteins involved in mediating growth and development. The encoded protein is processed from a precursor, bound by a specific receptor, and secreted. Defects in this gene are a cause of insulin-like growth factor I deficiency. Alternative splicing results in multiple transcript variants encoding different isoforms that may undergo similar processing to generate mature protein. [provided by RefSeq, Sep 2015]

**Protein Families:** Druggable Genome, ES Cell Differentiation/IPS, Secreted Protein

**Protein Pathways:** Dilated cardiomyopathy, Focal adhesion, Glioma, Hypertrophic cardiomyopathy (HCM), Long-term depression, Melanoma, mTOR signaling pathway, Oocyte meiosis, p53 signaling pathway, Pathways in cancer, Progesterone-mediated oocyte maturation, Prostate cancer

### Product images:



Coomassie blue staining of purified IGF1 protein (Cat# [TP312527]). The protein was produced from HEK293T cells transfected with IGF1 cDNA clone (Cat# [RC212527]) using MegaTran 2.0 (Cat# [TT210002]).