

Product datasheet for TP312526

PCLKC (CDHR2) (NM_017675) Human Recombinant Protein

Product data:

Product Type: Recombinant Proteins
Description: Recombinant protein of human protocadherin 24 (PCDH24), 20 µg
Species: Human
Expression Host: HEK293T
Expression cDNA Clone or AA Sequence: >RC212526 representing NM_017675
Red=Cloning site **Green**=Tags(s)

MAQLWLSCFLLPALVVSVAANVAPKFLANMTSVILPEDLPVGAQAFWLVAEDQDNDPLTYGMSGPNAYFF
AVTPKTGEVKLASALDYETLYTFKVTISVSDPYIQVQREMLVIVEDRNDNAPVFQNTAFSTSINETLPVG
SVVFSVLAVDKDMGSAGMVVYSIEKVIPSTGDSEHLFRILANGSIVLNGSLSYNNKSAFYQLELKACDLG
GMYHNTFTIQCSLPVFLSISVVDQPDLDQFVREFYASVAEDAAGKTSVLTVEAVDGDGKINDPVIYSI
SYSTRPGWFDIGADGVIRVNGSLDREQLLEADEEVQLQVTATETHLNIYQEAKVSIVWTVRVMVDVNDHK
PEFYNCSLPACTFTPEEAQVNFTGYVDEHASPRIPIDDLTMVYDPPDKGSNGTFLLSLGGPDAAEFVSP
ERAAGSASVQVLRVSALVDYERQTAMAVQVATDSVSQNFVAMVTIHLRDINDHRPTFPQSLYVLTVP
EHSATGSVVTDSIHATDPDTGAWGQITYSLLPGNGADLFQVDPVSGTVTVRNGELLDRESQAVYYLTLQA
TDGGNLSSTTLQIHLLDINDNAPVVSYSYINIFVQEEEGNVSVTIQAHDNDEPGTNNRLLFNLLPGPYS
HNFSLDPTGLLRNLGPLDREAIDPALEGRIVLTVLVSDCGEPVLGTVKVNVTITVEDINDNLPFNQSSY
NFTVKEEDPGVLVGVKAWDADQTEANNRISFSLSGSANYFMIRGLVLGAGWAEGLRLLPPDVSLDYET
QPVFNLTVSAENPDPQGGETIVDVCVNVKDVNDNPPTLDVASLRGIRVAENGSGHQVAVVWASDVDTSA
QLEIQLVNICTKAGVDVGLCWGWFVSAANGSVYINQSKAIDYACDLVTLVWRACDLATDPGFQAYSN
NGSLITIEDVNDNAPYFLPENKTFVIIPELVLPNREVASVRARDDSGNNGVILFSLRVDFISKDGAT
IPFQGVFSIFTSSEADVFAAGSIQPVTSLDSTLQGTQVTVQARDRPSLGPFLAATTLNLFVTDQSYRSR
LQFSTPKEEVGANRQAINAALTQATRTTYIVIDIQDIDSAARARPHSYLDAYFVFPNGSALTDELVSMI
RNDQDSLQLLQLGLVWLGSGESQESDLSKQLSIVIGLGVALLLVIMTMAFVCRKSYNRKQLQAMKA
AKEARKTAAGVMPSAPAIPGTNMYNTERANPMLNLPNKDLGLEYLSPSNDLDSVSVNSLDDNSVDVDKNS
QEIKEHRPHTPPEPDPEPLSVLLGRQAGASGQLEGPSYTNAGLDTTDL

TRTRPLEQKLISEEDLAANDILDYKDDDDKV

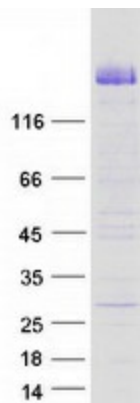
Tag: C-Myc/DDK
Predicted MW: 141.4 kDa
Concentration: >0.05 µg/µL as determined by microplate BCA method



[View online »](#)

Purity:	> 80% as determined by SDS-PAGE and Coomassie blue staining
Buffer:	25 mM Tris-HCl, 100 mM glycine, pH 7.3, 10% glycerol
Preparation:	Recombinant protein was captured through anti-DDK affinity column followed by conventional chromatography steps.
Note:	For testing in cell culture applications, please filter before use. Note that you may experience some loss of protein during the filtration process.
Storage:	Store at -80°C.
Stability:	Stable for 12 months from the date of receipt of the product under proper storage and handling conditions. Avoid repeated freeze-thaw cycles.
RefSeq:	NP_060145
Locus ID:	54825
UniProt ID:	Q9BYE9
RefSeq Size:	4116
Cytogenetics:	5q35.2
RefSeq ORF:	3930
Synonyms:	PCDH24; PCLKC
Summary:	This gene is a member of the protocadherin family, which represents a subset of the larger cadherin superfamily. The members of the protocadherin family encode non-classical cadherins that function as calcium-dependent cell-cell adhesion molecules. This protocadherin represents a new candidate for tumor suppression. Alternatively spliced transcript variants that encode the same protein have been identified. [provided by RefSeq, Jan 2010]
Protein Families:	Transmembrane

Product images:



Coomassie blue staining of purified CDHR2 protein (Cat# TP312526). The protein was produced from HEK293T cells transfected with CDHR2 cDNA clone (Cat# [RC212526]) using MegaTran 2.0 (Cat# [TT210002]).