

Product datasheet for **TP312522M**

GDPGP1 (NM_001013657) Human Recombinant Protein

Product data:

Product Type: Recombinant Proteins
Description: Recombinant protein of human chromosome 15 open reading frame 58 (C15orf58), 100 µg
Species: Human
Expression Host: HEK293T
Expression cDNA Clone or AA Sequence: >RC212522 representing NM_001013657
Red=Cloning site **Green**=Tags(s)

MALPHDSNETSYLLPPNEDWGRQTIPDFVYGQKDLMAEGIQWPRNAPGIPDALPQSPFDAALCSAWKQR
VELGLFRYRLRELQTQILPGAVGFVAQLNVERGVQRRPPQTIKSVRQAFDPVQFNFNKIRPGEVLFRLHR
EPDLPGTLLQEDILVVINVSPLEWGHVLLVPEPARQLPQRLLPGALRAGIEAVLLSLHPGFRVGFNSLGG
LASVNHHLHGYYLAHRLPVEQAPSEPLDPGGHLHLLQDL P APGFLFYTRGPGPDLESISRVCRA TDYL
TDHEIAHNLFVTRGAPPGKTSPSSALTGVRVILWARKSSFGIKDGEAFNVALCELAGHLPVKTSQDFSSL
TEAAVALIQDCRLPPSQAEDVQAALVALMSQEEQ

TRTRPLEQKLISEEDLAANDILDYKDDDDKV

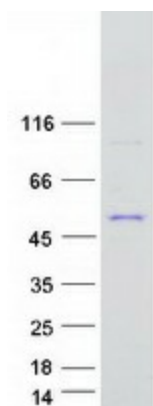
Tag: C-Myc/DDK
Predicted MW: 42.2 kDa
Concentration: >0.05 µg/µL as determined by microplate BCA method
Purity: > 80% as determined by SDS-PAGE and Coomassie blue staining
Buffer: 25 mM Tris-HCl, 100 mM glycine, pH 7.3, 10% glycerol
Preparation: Recombinant protein was captured through anti-DDK affinity column followed by conventional chromatography steps.
Note: For testing in cell culture applications, please filter before use. Note that you may experience some loss of protein during the filtration process.
Storage: Store at -80°C.
Stability: Stable for 12 months from the date of receipt of the product under proper storage and handling conditions. Avoid repeated freeze-thaw cycles.
RefSeq: [NP_001013679](#)
Locus ID: 390637



[View online »](#)

UniProt ID:	Q6ZNW5 , A0A024RC68
RefSeq Size:	1940
Cytogenetics:	15q26.1
RefSeq ORF:	1155
Synonyms:	C15orf58; VTC2
Summary:	Specific and highly efficient GDP-D-glucose phosphorylase regulating the levels of GDP-D-glucose in cells.[UniProtKB/Swiss-Prot Function]

Product images:



Coomassie blue staining of purified GDPGP1 protein (Cat# [TP312522]). The protein was produced from HEK293T cells transfected with GDPGP1 cDNA clone (Cat# [RC212522]) using MegaTran 2.0 (Cat# [TT210002]).