

Product datasheet for **TP312522L**

GDPGP1 (NM_001013657) Human Recombinant Protein

Product data:

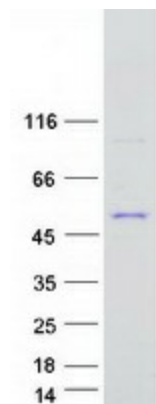
Product Type:	Recombinant Proteins
Description:	Recombinant protein of human chromosome 15 open reading frame 58 (C15orf58), 1 mg
Species:	Human
Expression Host:	HEK293T
Expression cDNA Clone or AA Sequence:	>RC212522 representing NM_001013657 Red =Cloning site Green =Tags(s)
	<p>MALPHDSNETSYLLPPNNEDWGRQTIPDFVYGQKDLMAEGIQWPRNAPGIPDALPQSPFDAALCSAWKQR VELGLFRYRLRELQTQILPGAVGFVAQLNVERGVQRRPPQTIKSVRQAFDPVQFNFNKIRPGEVLFRLHR EPDLPGTLLQEDILVVINVSPLEWGHVLLVPEPARQLPQRLLPGALRAGIEAVLLSLHPGFRVGFNSLGG LASVNHHLHGYLAHRLPVEQAPSEPLDPGGHLHLLQDLAPAGFLFYTRGPGPDLESISRVCRTDYL TDHEIAHNLFVTRGAPPGKTSPSSALTGVRVILWARKSSFSGIKDGEAFNVALCELAGHLPVKTSQDFSSL TEAAVALIQDCRLPPSQAEDVQAALVALMSQEEQ</p> <p>TRTRPLEQKLISEEDLAANDILDYKDDDDKV</p>
Tag:	C-Myc/DDK
Predicted MW:	42.2 kDa
Concentration:	>0.05 µg/µL as determined by microplate BCA method
Purity:	> 80% as determined by SDS-PAGE and Coomassie blue staining
Buffer:	25 mM Tris-HCl, 100 mM glycine, pH 7.3, 10% glycerol
Preparation:	Recombinant protein was captured through anti-DDK affinity column followed by conventional chromatography steps.
Note:	For testing in cell culture applications, please filter before use. Note that you may experience some loss of protein during the filtration process.
Storage:	Store at -80°C.
Stability:	Stable for 12 months from the date of receipt of the product under proper storage and handling conditions. Avoid repeated freeze-thaw cycles.
RefSeq:	<u>NP_001013679</u>
Locus ID:	390637



[View online »](#)

UniProt ID:	<u>Q6ZNW5</u> , <u>A0A024RC68</u>
RefSeq Size:	1940
Cytogenetics:	15q26.1
RefSeq ORF:	1155
Synonyms:	C15orf58; VTC2
Summary:	Specific and highly efficient GDP-D-glucose phosphorylase regulating the levels of GDP-D-glucose in cells.[UniProtKB/Swiss-Prot Function]

Product images:



Coomassie blue staining of purified GDPGP1 protein (Cat# [TP312522]). The protein was produced from HEK293T cells transfected with GDPGP1 cDNA clone (Cat# [RC212522]) using MegaTran 2.0 (Cat# [TT210002]).